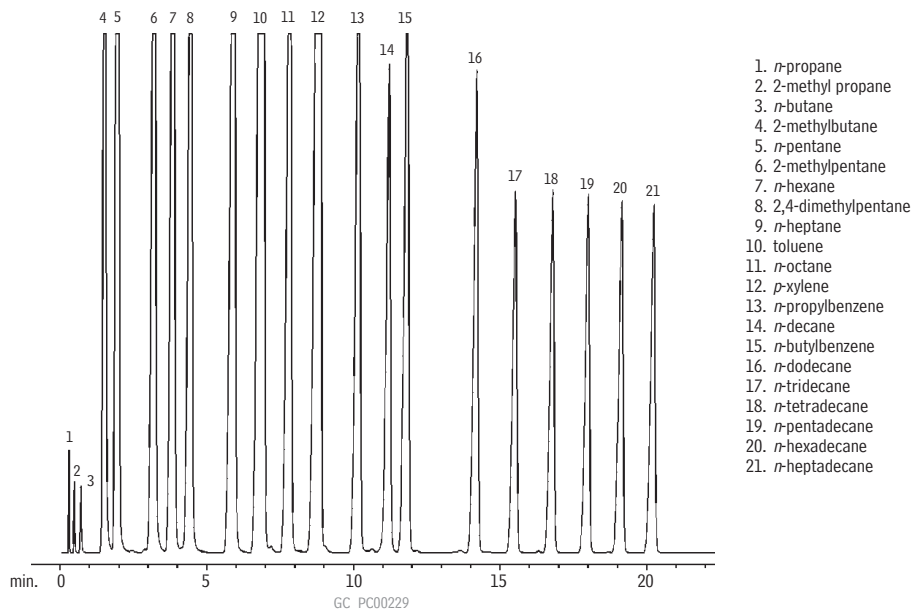


Sim Dist, ASTM D-3710

Rtx[®]-1 SimDist 2887

(calibration)



25" x 1/8" OD x 2mm ID Rtx[®]-1 SimDist 2887, SilcoSmooth[™] stainless steel (cat.# 80000)
D-3710 Calibration Mix, C3, C4, C16, & C17 added
Oven temp: -30°C to 250°C @ 10°C/min.
Inj./det. temp.: 250°C / 300°C
Carrier gas: helium @ 25mL/min.
FID sensitivity: 256 x 10⁻¹¹ AFS

Restek Corporation 110 Benner Circle Bellefonte, PA 16823
814-353-1300 • 800-356-1688 • Fax: 814-353-1309 • www.restek.com