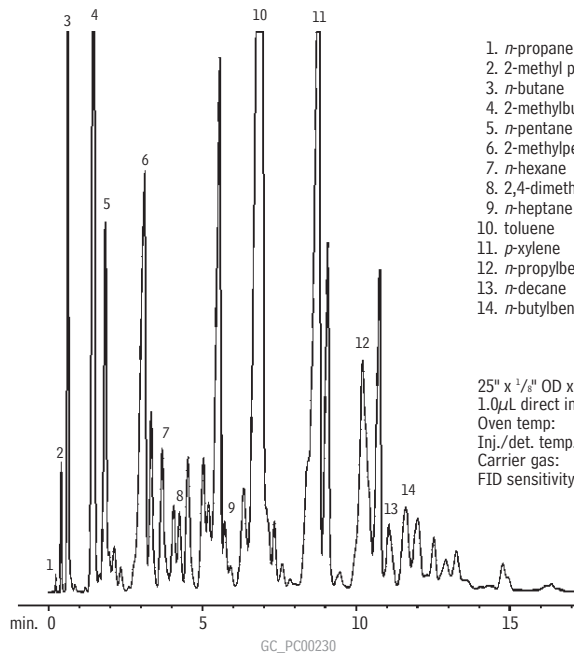


**Sim Dist, ASTM D-3710 (Gasoline)
Rtx[®]-1 SimDist 2887**



1. *n*-propane
2. 2-methyl propane
3. *n*-butane
4. 2-methylbutane
5. *n*-pentane
6. 2-methylpentane
7. *n*-hexane
8. 2,4-dimethylpentane
9. *n*-heptane
10. toluene
11. *p*-xylene
12. *n*-propylbenzene
13. *n*-decane
14. *n*-butylbenzene

25" x 1/8" OD x 2mm ID Rtx[®]-1 SimDist 2887, SilcoSmooth[™] stainless steel (cat.# 80000)
1.0 μ L direct injection of unleaded gasoline (ASTM D-2887)
Oven temp.: -30°C to 250°C @ 10°C/min.
Inj./det. temp.: 250°C/300°C
Carrier gas: helium @ 25mL/min.
FID sensitivity: 256 x 10¹¹ AFS