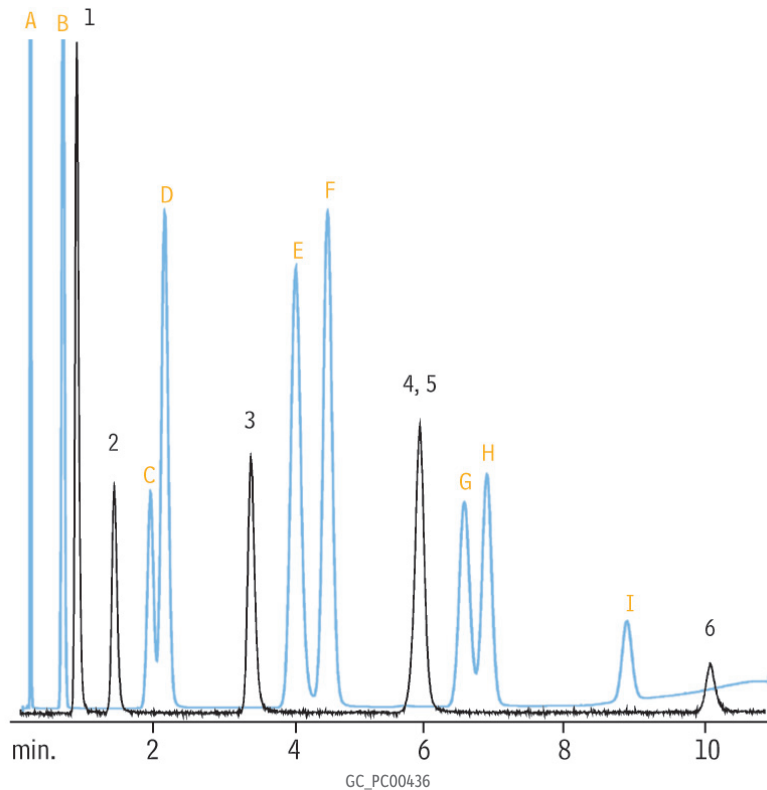


## Sulfur Compounds and Hydrocarbons on Rt®-XLSulfur



### Sulfurs

1. Hydrogen sulfide
2. Carbonyl sulfide
3. Methyl mercaptan
4. Ethyl mercaptan
5. Dimethyl sulfide
6. Dimethyl disulfide

### Hydrocarbons

- A. Methane
- B. Ethane
- C. Propylene
- D. Propane
- E. Isobutane
- F. Butane
- G. Isopentane
- H. Pentane
- I. Hexane

### Column

Rt®-XLSulfur, 1m, 0.95mm OD, 0.75 mm ID (cat.# 19806)

### Sample

Conc.: 50 ppb each  
packed not on-column

### Injection

### Oven

Oven Temp: 60 °C to 230 °C at 15 °C/min.

### Carrier Gas

He, constant flow

### Flow Rate:

9 mL/min.

### Detector

SCD/FID

### Acknowledgement

Sulfur standards courtesy of DCG Partnership 1 Ltd., Pearland, TX.