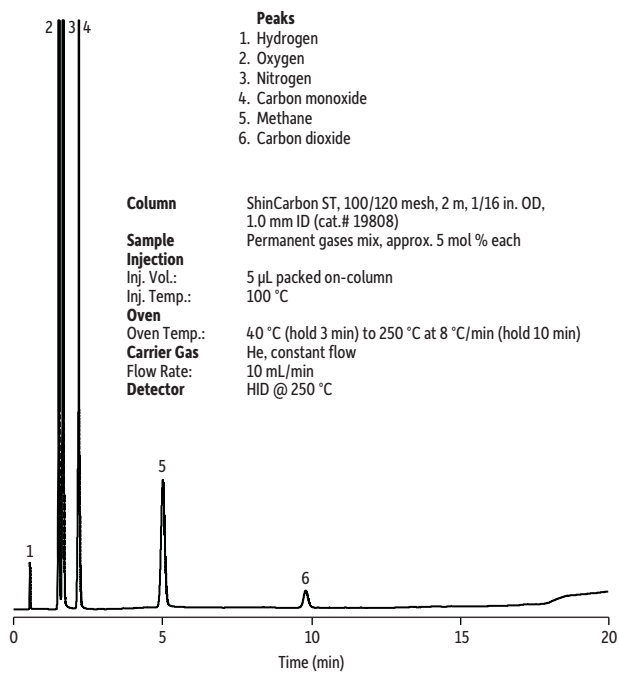


**Permanent Gases**  
**ShinCarbon ST**  
(micropacked)



- Peaks**
1. Hydrogen
  2. Oxygen
  3. Nitrogen
  4. Carbon monoxide
  5. Methane
  6. Carbon dioxide

**Column** ShinCarbon ST, 100/120 mesh, 2 m, 1/16 in. OD, 1.0 mm ID (cat.# 19808)  
**Sample Injection** Permanent gases mix, approx. 5 mol % each  
**Inj. Vol.:** 5  $\mu$ L packed on-column  
**Inj. Temp.:** 100  $^{\circ}$ C  
**Oven**  
**Oven Temp.:** 40  $^{\circ}$ C (hold 3 min) to 250  $^{\circ}$ C at 8  $^{\circ}$ C/min (hold 10 min)  
**Carrier Gas** He, constant flow  
**Flow Rate:** 10 mL/min  
**Detector** HID @ 250  $^{\circ}$ C

GC\_PC00666