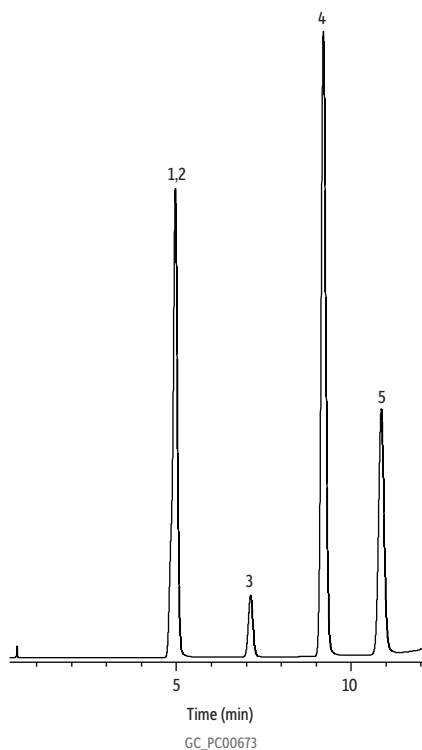


## Chlorofluorocarbon Gases on ShinCarbon ST (micropacked)



Peaks
1. CFC-22
2. CFC-134a
3. CFC-12
4. CFC-133a
5. CFC-114

tr (min)
4.95
4.95
7.11
9.19
10.85

<b>Column</b>	100/120 mesh on ShinCarbon ST, SilcoSmooth tubing, 1 m, 1/16 OD, 1.0 mm ID (cat.# 19809)
<b>Standard/Sample</b>	Fluorocarbon blend
<b>Conc.:</b>	~1-3% each
<b>Injection</b>	
<b>Inj. Vol.:</b>	5 µL packed on-column
<b>Inj. Temp.:</b>	200 °C
<b>Oven</b>	
<b>Oven Temp.:</b>	125 °C to 320 °C at 16 °C/min
<b>Carrier Gas</b>	He, constant flow
<b>Flow Rate:</b>	10 mL/min
<b>Detector</b>	FID @ 250 °C