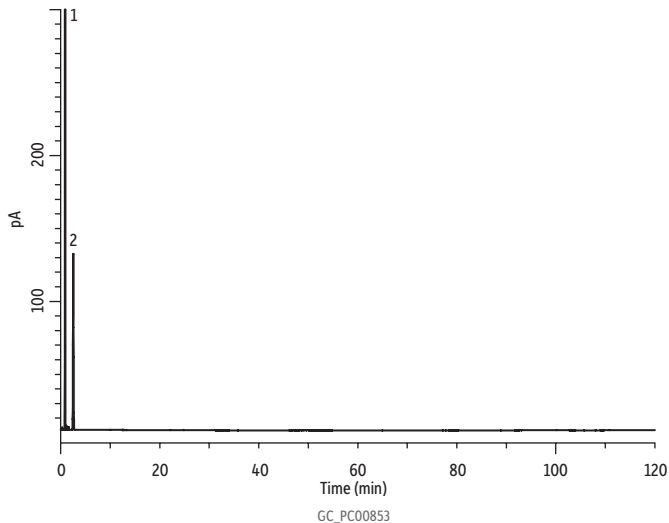


## FID Baseline Stability Using a Parker Hydrogen Generator



### Peaks

1. Solvent
2. *n*-Tridecane

### Column

Rtx-1, 30 m, 0.53 mm ID, 5.00  $\mu$ m (cat.# 10179)  
Sample Custom *n*-tridecane mix  
Diluent: Methylene chloride  
Conc.: 1  $\mu$ g/mL

### Injection

Inj. Vol.: 0.1  $\mu$ L splitless (hold 1 min)  
Liner: 4 mm Splitless (cat.# 20904)  
Inj. Temp.: 250 °C

### Oven

Oven Temp.: 40 °C (hold 120 min)

### Carrier Gas

H<sub>2</sub>, constant flow

Linear Velocity: 184 cm/sec

### Detector

FID @ 280 °C

Carrier Gas: Parker hydrogen generator @ 40° C.

Constant flow determined at 40° C.