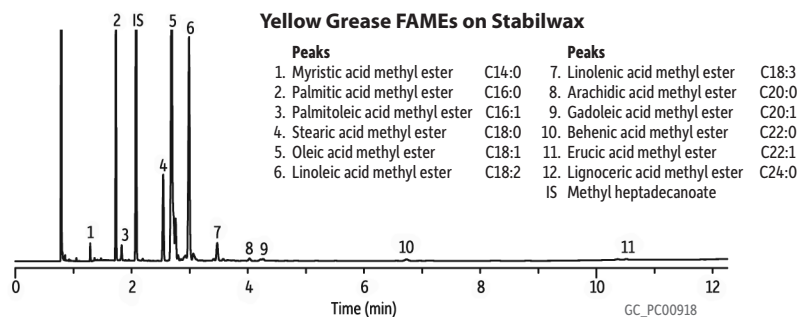
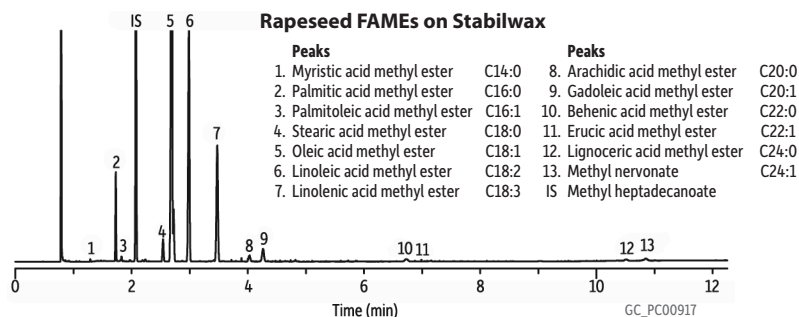
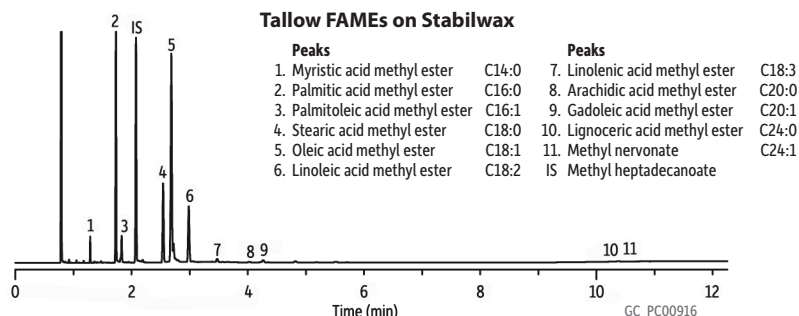
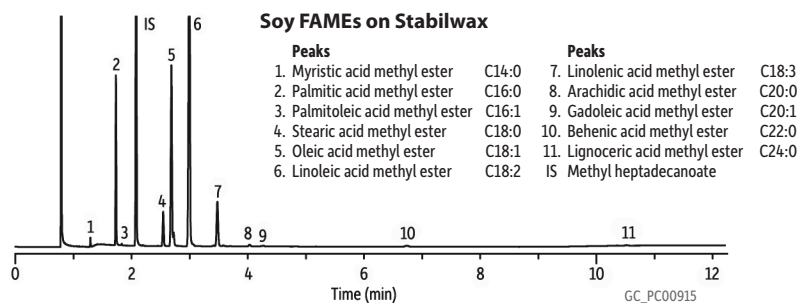


FAMES in Biodiesel Oils on Stabilwax



Column Stabilwax, 30 m, 0.32 mm ID, 0.25 µm (cat.# 10624)
Sample Various sources of biodiesel (B100), prepared according to European Method EN 14103
Injection
 Inj. Vol.: 1.0 µL split (split ratio 100:1)
 Liner: Cyclosplitter (cat.# 20706)
 Inj. Temp.: 250 °C
Oven
 Oven Temp.: 210 °C (hold 5 min) to 230 °C at 20 °C/min (hold 5 min)
Carrier Gas H₂, constant flow
 Flow Rate: 3 mL/min
 Linear Velocity: 60 cm/sec
Detector FID @ 250 °C