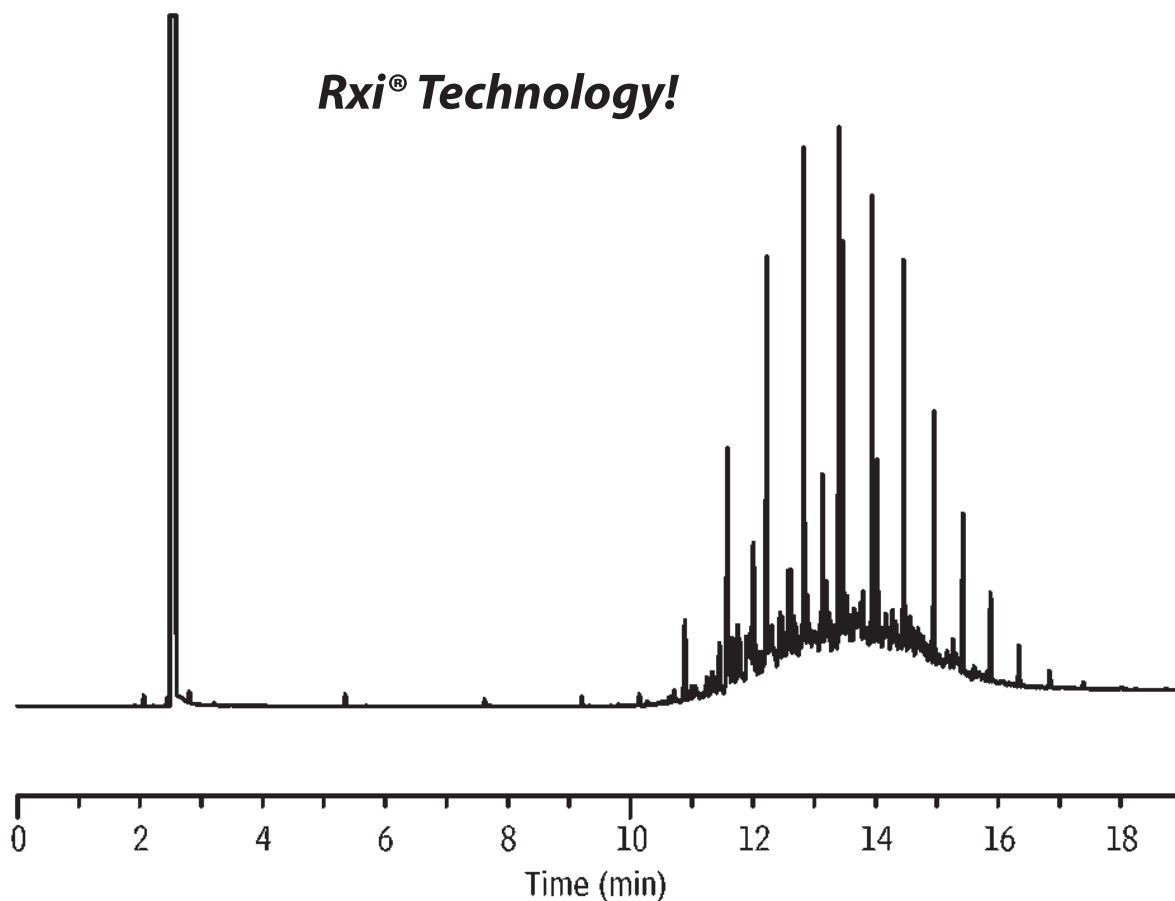


50% Weathered Diesel Fuel #2

Rxi[®]-1ms



GC_PC00921

Column: Rxi[®]-1ms, 30m, 0.25mm ID, 0.50 μ m (cat.# 13338)
Sample: 5000 μ g/mL diesel fuel #2, 50% weathered (cat.# 31235)
in methylene chloride
Inj.: 1.0 μ L split (split ratio 20:1), 4mm single gooseneck
w/wool inlet liner (cat.# 22405)
Inj. temp.: 250 $^{\circ}$ C
Carrier gas: helium, constant flow
Linear velocity: 28cm/sec. @ 50 $^{\circ}$ C
Oven temp.: 50 $^{\circ}$ C (hold 2 min.) to 75 $^{\circ}$ C @ 10 $^{\circ}$ C/min.,
300 $^{\circ}$ C @ 20 $^{\circ}$ C/min. (hold 5 min.)
Det.: FID @ 300 $^{\circ}$ C