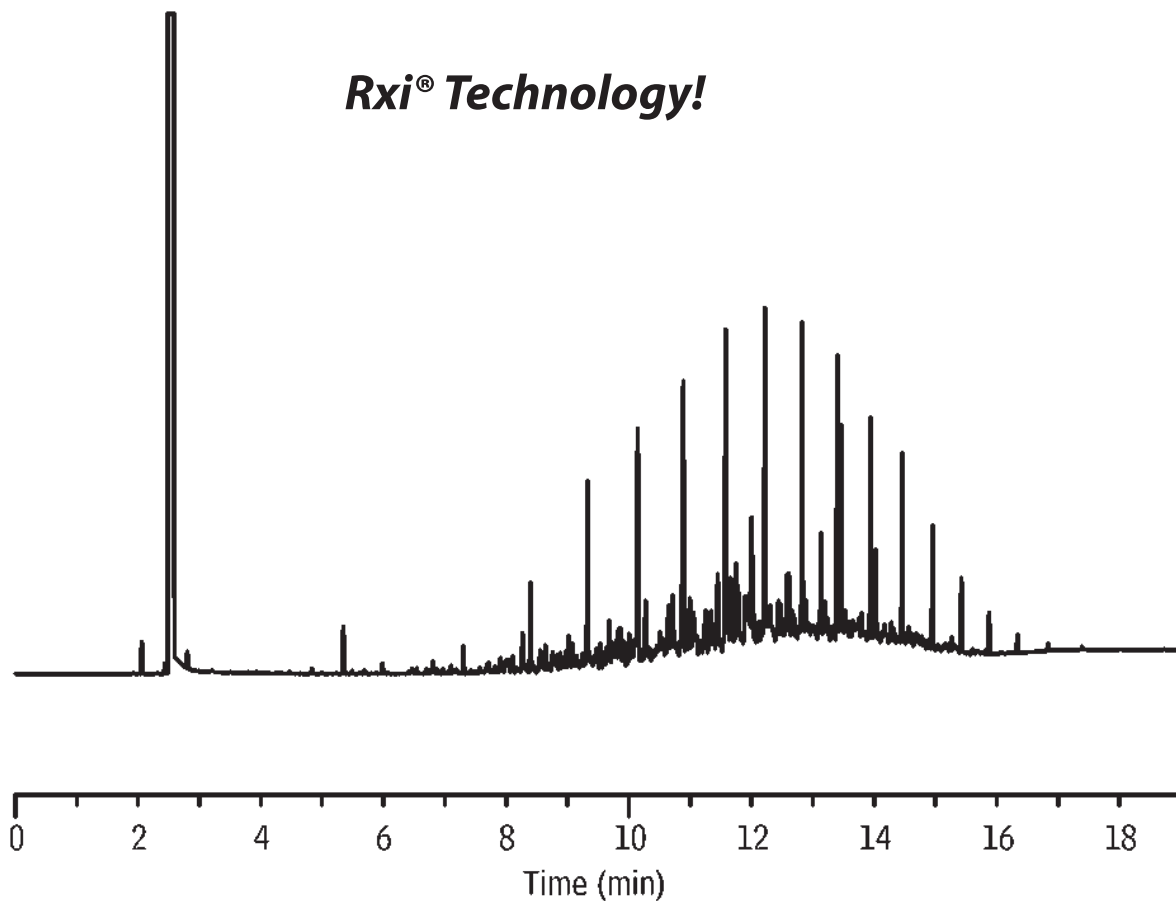


# Unweathered Diesel Fuel #2

## Rxi<sup>®</sup>-1ms



GC\_PC00922

Column: Rxi<sup>®</sup>-1ms, 30m, 0.25mm ID, 0.50 $\mu$ m (cat.# 13338)  
Sample: 5000 $\mu$ g/mL diesel fuel #2, unweathered (cat.# 31233) in methylene chloride  
Inj.: 1.0 $\mu$ L split (split ratio 20:1),  
4mm single gooseneck w/wool inlet liner (cat.# 22405)  
Inj. temp.: 250 $^{\circ}$ C  
Carrier gas: helium, constant flow  
Linear velocity: 28cm/sec. @ 50 $^{\circ}$ C  
Oven temp.: 50 $^{\circ}$ C (hold 2 min.) to 75 $^{\circ}$ C @ 10 $^{\circ}$ C/min.,  
300 $^{\circ}$ C @ 20 $^{\circ}$ C/min. (hold 5 min.)  
Det.: FID @ 300 $^{\circ}$ C