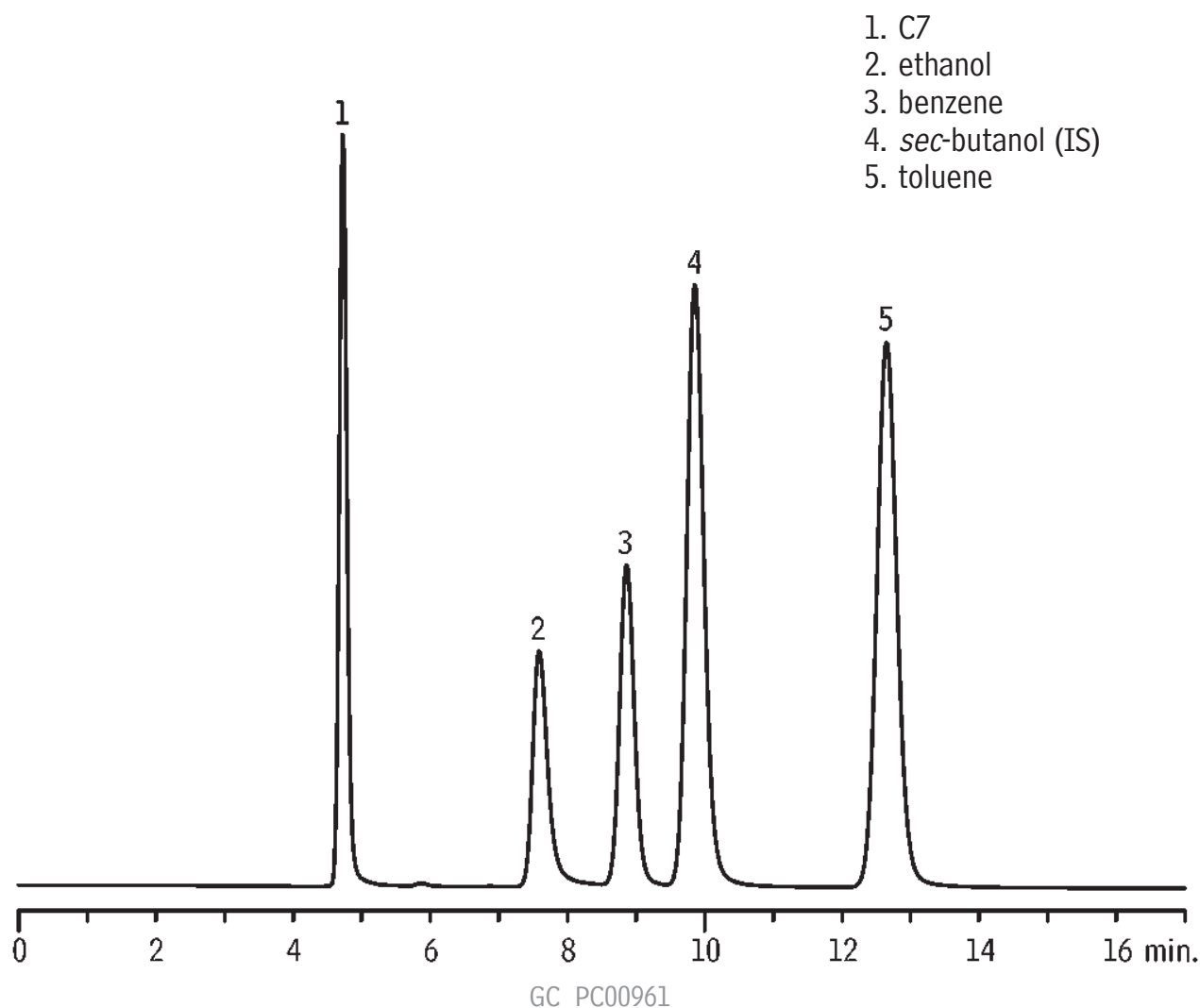


Spark Ignition Fuel Aromatics D3606 Column Set



Column: D3606 Column Set
column 1: 6' x 1/8" OD (1.8m x 2mm ID), nonpolar Rtx®-1 polymer
column 2: 16' x 1/8" OD (4.9m x 2mm ID), proprietary packing

Sample: 0.05µg/µL; C7 (26%), ethanol (10%) benzene(10%), *sec*-butanol (26%), toluene (26%)

Inj.: 0.05µL, direct injection
Inj. temp.: 200°C
Carrier gas: helium, constant flow
Flow rate: 20mL/min.
Oven temp.: 135°C, isothermal
Det.: FID @ 250°C