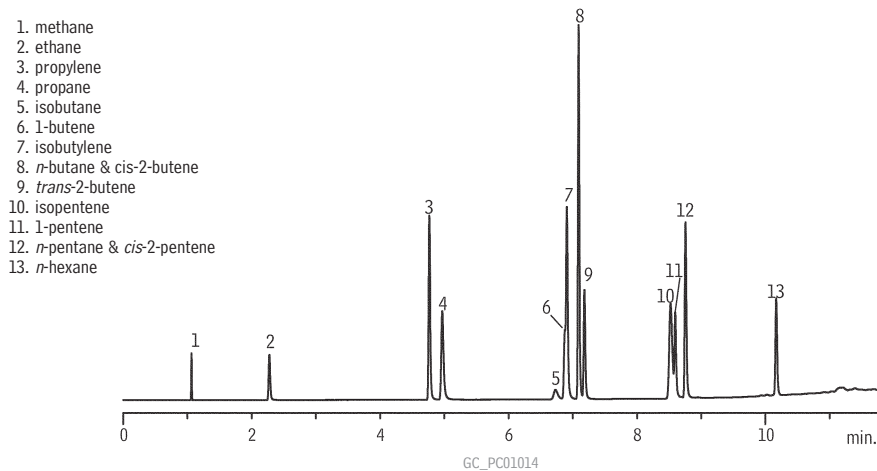


## Refinery Gas #6 Rt®-QS-BOND



Column: Rt®-QS-BOND, 30m, 0.53mm ID (cat.# 19738)  
Sample: refinery gas mix (mole%)  
Inj.: 20 $\mu$ L split (split ratio 10:1), 4mm Siletek® single gooseneck liner (cat.# 20798-214.1)  
Inj. temp.: 240°C  
Carrier gas: helium, constant flow  
Flow rate: 5.7mL/min. @ 40°C  
Oven temp.: 40°C (hold 2 min.) to 225°C @ 15°C/min. (hold 5 min.)  
Det.: FID @ 240°C