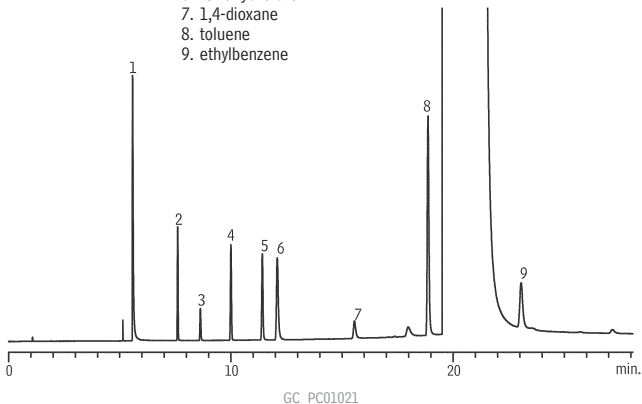


# Solvents

## Rt<sup>®</sup>-QS-BOND

1. methanol
2. acetonitrile
3. methylene chloride
4. *trans*-1,2-dichloroethylene
5. *cis*-1,2-dichloroethylene
6. tetrahydrofuran
7. 1,4-dioxane
8. toluene
9. ethylbenzene



Column: Rt<sup>®</sup>-QS-BOND, 30m, 0.53mm ID (cat.# 19738)  
Sample: 100-1,000 $\mu$ g/mL solvent mix in DMSO:water, 60:40 (v/v)  
Inj.: 1 $\mu$ L split (split ratio 5:1), 4mm Siltex<sup>®</sup> single gooseneck liner (cat.# 20798-214.1)  
Inj. temp.: 240 $^{\circ}$ C  
Carrier gas: helium, constant flow  
Flow rate: 5.7mL/min. @ 40 $^{\circ}$ C  
Oven temp.: 40 $^{\circ}$ C (hold 0.5min.) to 120 $^{\circ}$ C @ 15 $^{\circ}$ C/min. to 200 $^{\circ}$ C @ 5 $^{\circ}$ C/min. (hold 10 min.)  
Det.: FID @ 240 $^{\circ}$ C