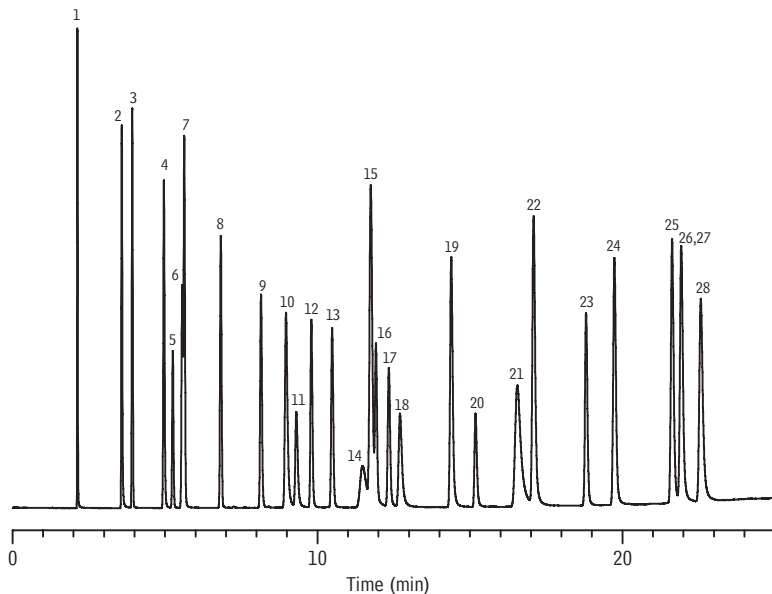


Solvent Mixture Rt[®]-Q-BOND



GC_PC01082

- | | |
|---------------------------------------|-------------------------|
| 1. methanol | 15. benzene |
| 2. ethanol | 16. 1,2-dimethoxyethane |
| 3. acetonitrile | 17. trichloroethylene |
| 4. acetone | 18. 1,4-dioxane |
| 5. dichloromethane | 19. pyridine |
| 6. 1,1-dichloroethene | 20. dimethylformamide |
| 7. nitromethane | 21. methylcyclohexane |
| 8. <i>trans</i> -1,2-dichloroethylene | 22. toluene |
| 9. <i>cis</i> -1,2-dichloroethylene | 23. 2-hexanone |
| 10. tetrahydrofuran | 24. chlorobenzene |
| 11. chloroform | 25. ethylbenzene |
| 12. ethyl acetate | 26. <i>m</i> -xylene |
| 13. 1,2-dichloroethane | 27. <i>p</i> -xylene |
| 14. 1,1,1-trichloroethane | 28. <i>o</i> -xylene |

Column: Rt[®]-Q-BOND, 30m, 0.53mm ID, 20 μ m (cat.# 19742)
Sample: solvent mixture
Inj.: 1.0 μ L, split (split vent flow 100mL/min.),
4mm single gooseneck liner (cat.# 20798)
Inj. temp.: 200 $^{\circ}$ C
Carrier gas: hydrogen, constant pressure, 4.2psi
Linear velocity: 40cm/sec. @ 120 $^{\circ}$ C
Oven temp.: 120 $^{\circ}$ C to 240 $^{\circ}$ C @ 5 $^{\circ}$ C/min. (hold 5.0 min.)
Det.: FID @ 240 $^{\circ}$ C