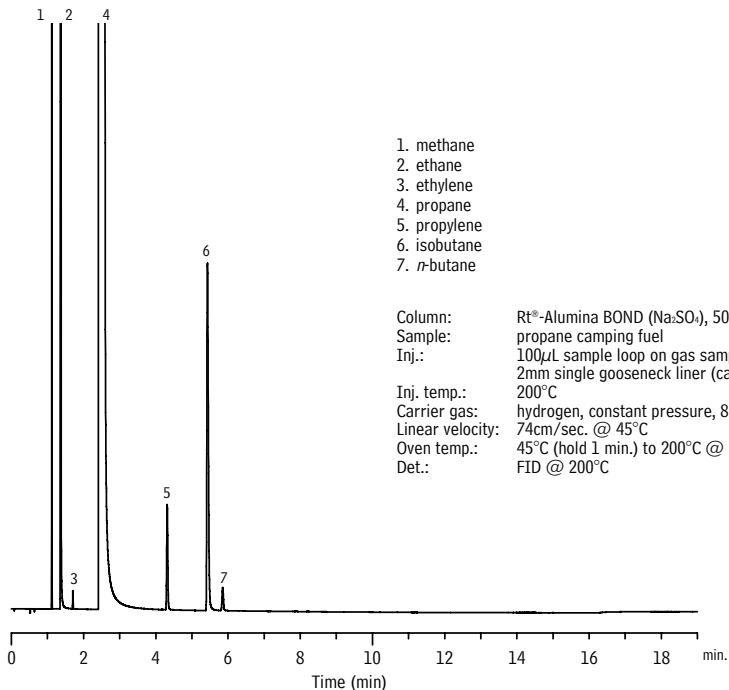


Propane Camping Fuel Rt[®]-Alumina BOND (Na₂SO₄)



1. methane
2. ethane
3. ethylene
4. propane
5. propylene
6. isobutane
7. *n*-butane

Column: Rt[®]-Alumina BOND (Na₂SO₄), 50m, 0.53mm ID, 10 μ m (cat.# 19756)
Sample: propane camping fuel
Inj.: 100 μ L sample loop on gas sampling valve, split (split vent flow 400mL/min.),
2mm single gooseneck liner (cat.# 20795)
Inj. temp.: 200°C
Carrier gas: hydrogen, constant pressure, 8.0psi
Linear velocity: 74cm/sec. @ 45°C
Oven temp.: 45°C (hold 1 min.) to 200°C @ 10°C/min. (hold 3.5 min.)
Det.: FID @ 200°C

GC_PC01084