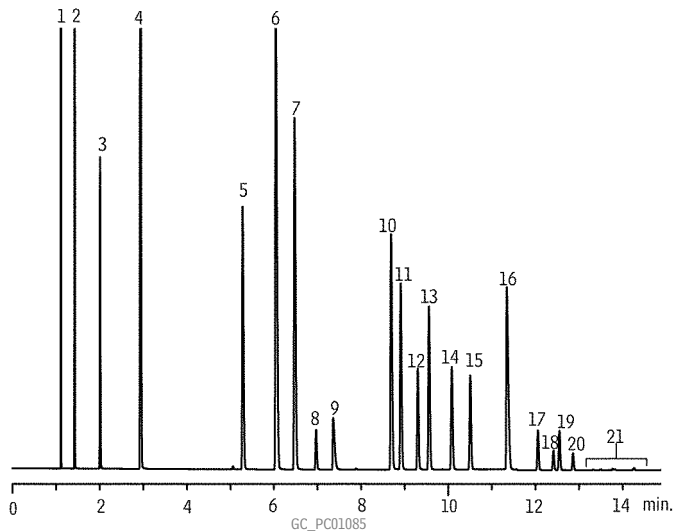


# Refinery Gas

## Rt®-Alumina BOND (Na<sub>2</sub>SO<sub>4</sub>)



1. methane
2. ethane
3. ethylene
4. propane
5. propylene
6. isobutane
7. *n*-butane
8. propadiene
9. acetylene
10. *trans*-2-butene
11. 1-butene
12. isobutylene
13. *cis*-2-butene
14. isopentane
15. *n*-pentane
16. 1,3-butadiene
17. *trans*-2-pentene
18. 2-methyl-2-butene
19. 1-pentene
20. *cis*-2-pentene
21. hexanes

Column: Rt®-Alumina BOND (Na<sub>2</sub>SO<sub>4</sub>), 50m, 0.53mm ID, 10 $\mu$ m (cat.# 19756)  
Sample: refinery gas  
Inj.: 10 $\mu$ L split (split vent flow 80mL/min.), 2mm single gooseneck liner (cat.# 20795)  
Inj. temp.: 200°C  
Carrier gas: hydrogen, constant pressure, 8.0psi  
Linear velocity: 74cm/sec. @ 45°C  
Oven temp.: 45°C (hold 1 min.) to 200°C @ 10°C/min. (hold 3.5 min.)  
Det.: FID @ 200°C