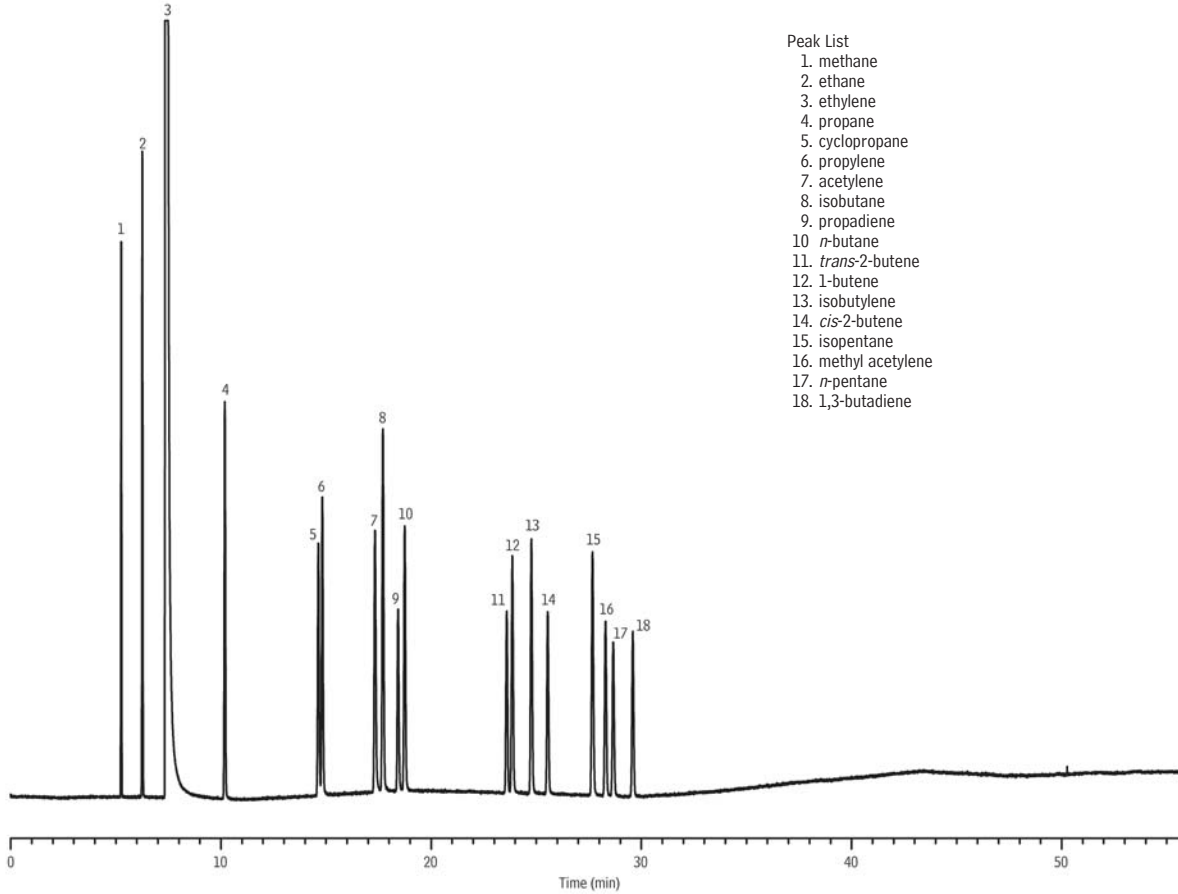


Ethylene and C1-C5 Hydrocarbons
ASTM D6159-97
Rt®-Alumina BOND/KCl, Rtx®-1



- Peak List
1. methane
 2. ethane
 3. ethylene
 4. propane
 5. cyclopropane
 6. propylene
 7. acetylene
 8. isobutane
 9. propadiene
 10. *n*-butane
 11. *trans*-2-butene
 12. 1-butene
 13. isobutylene
 14. *cis*-2-butene
 15. isopentane
 16. methyl acetylene
 17. *n*-pentane
 18. 1,3-butadiene

GC_PC01110

Column: Rt®-Alumina BOND/KCl, 50m, 0.53mm ID, 10.0µm (cat.# 19760) in series with Rtx®-1, 30m, 0.53mm ID, 5.0µm (cat.# 10179)
Sample: ethylene and C1-C5 hydrocarbons
Inj.: 1µL split, 60mL/min. split vent flow rate
2mm splitless liner (cat.# 20712)
Inj. temp.: 200°C
Carrier gas: helium, constant pressure (8.0psi, 55.2kPa)
Linear velocity: 25.4cm/sec. @ 35°C
Oven temp.: 35°C (hold 2 min.) to 190°C @ 4°C/min. (hold 15 min.)
(conditions as per ASTM D6159-97)
Det.: FID @ 200°C
Instrument: Agilent 5890