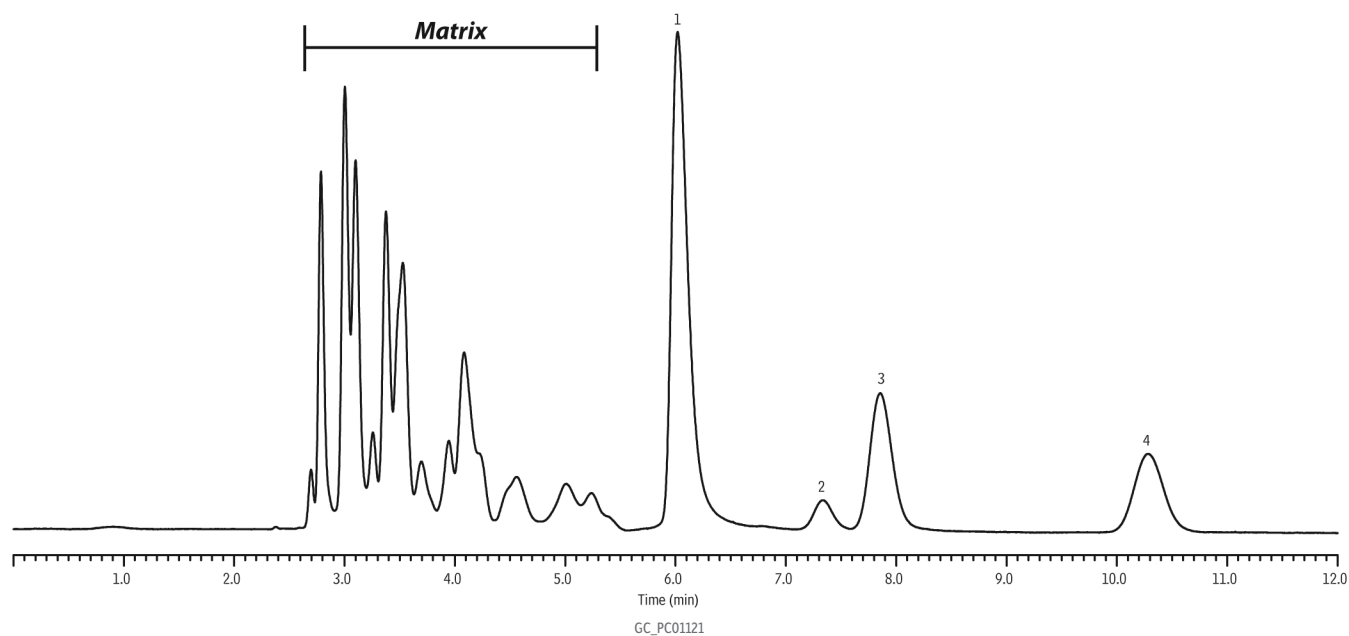


Gasoline on ASTM D3606 Packed GC Column Set



Peaks

1. Ethanol
2. Benzene
3. 2-Butanol (IS)
4. Toluene

Column

D3606 packed GC column set (includes Column 1: backflush column, 6' (1.8 m), 1/8" OD, 2.0 mm ID; Column 2: proprietary packing, 16' (4.9 m), 1/8" OD, 2.0 mm ID (cat.# 83606-800) Commercial gasoline

Standard/Sample

Injection

Inj. Vol.: 1 μ L Direct
Inj. Temp.: 200 °C

Oven

Oven Temp.: 135 °C

Carrier Gas He, constant flow

Flow Rate: 20 mL/min

Detector TCD @ 230 °C

Instrument Agilent/HP6890 GC

Notes Valve box temp.: 200°C

Backflush time: 3 min.