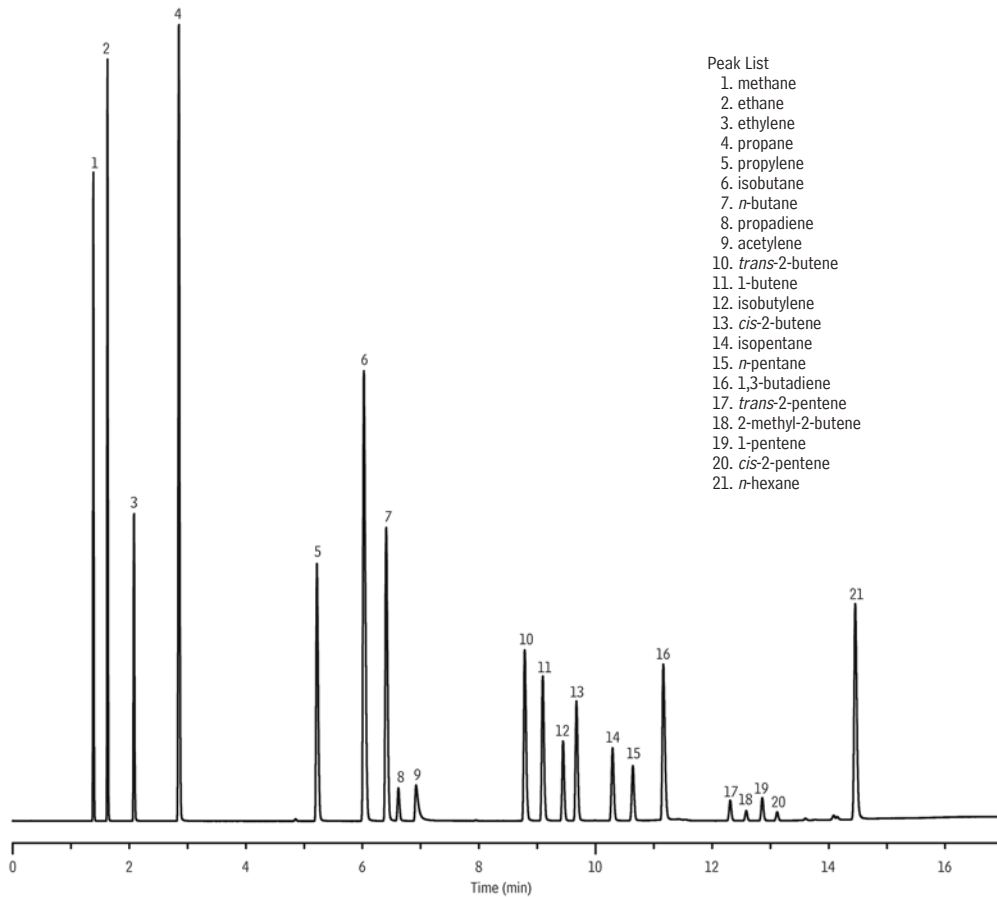


Refinery Gas Hydrocarbons
Rt®-Alumina BOND/Na₂SO₄



- Peak List
- 1. methane
 - 2. ethane
 - 3. ethylene
 - 4. propane
 - 5. propylene
 - 6. isobutane
 - 7. *n*-butane
 - 8. propadiene
 - 9. acetylene
 - 10. *trans*-2-butene
 - 11. 1-butene
 - 12. isobutylene
 - 13. *cis*-2-butene
 - 14. isopentane
 - 15. *n*-pentane
 - 16. 1,3-butadiene
 - 17. *trans*-2-pentene
 - 18. 2-methyl-2-butene
 - 19. 1-pentene
 - 20. *cis*-2-pentene
 - 21. *n*-hexane

GC_PC01139

Column: Rt®-Alumina BOND Na₂SO₄, 30m, 0.53mm ID, 10.0µm (cat.# 19755)
Sample: refinery gas hydrocarbons through C6
Inj.: 10µL split, 40mL/min. split vent flow rate
2mm split Precision™ liner w/wool (cat.# 20823)
Inj. temp.: 200°C
Carrier gas: helium, constant pressure (5.0psi, 34.5kPa)
Linear velocity: 37.3cm/sec. @ 60°C
Oven temp.: 60°C (hold 2 min.) to 200°C @ 10°C/min. (hold 1 min.)
Det.: FID @ 200°C
Instrument: Agilent 5890