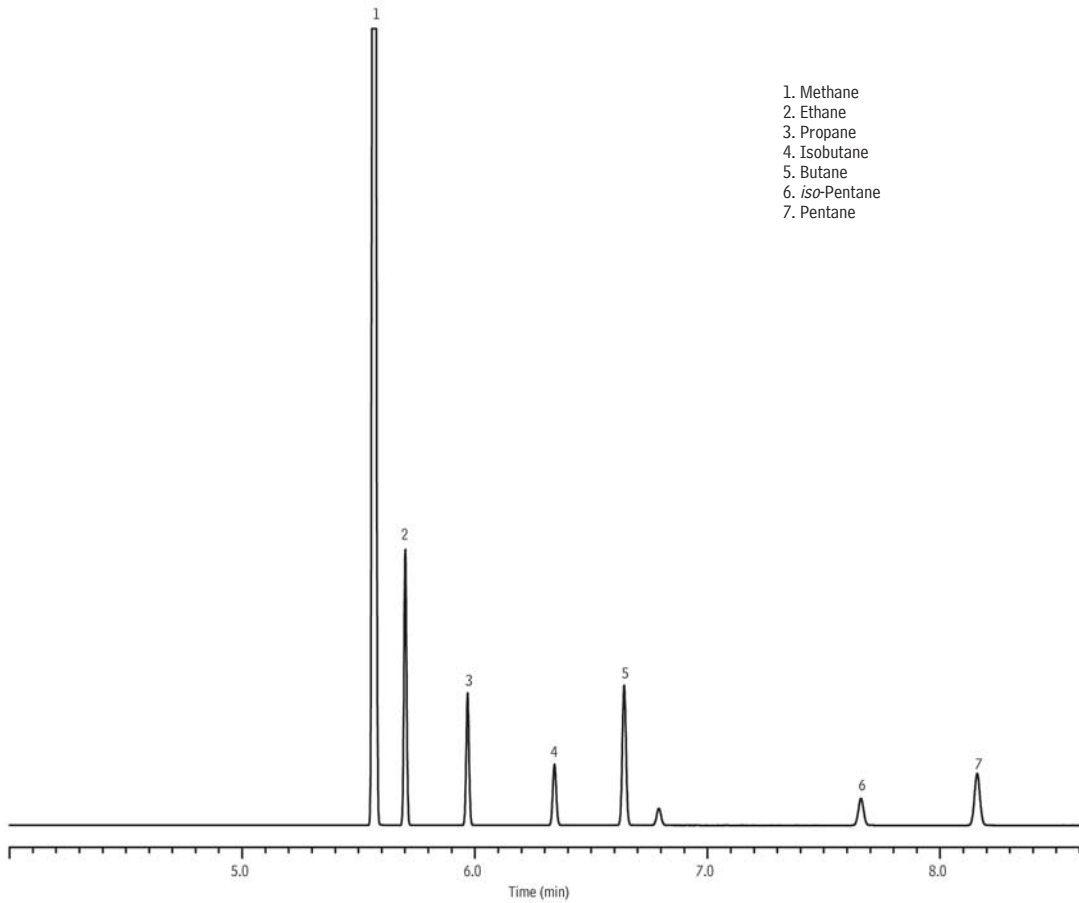


Natural Gas (82% Methane) on Rtx[®]-DHA-150



- 1. Methane
- 2. Ethane
- 3. Propane
- 4. Isobutane
- 5. Butane
- 6. *iso*-Pentane
- 7. Pentane

GC_PC1147

Column Rtx[®]-DHA-150 150m, 0.25mm ID, 1.0 μ m (cat.# 10149)
Sample Natural gas (82% methane)
Diluent: Helium
Conc.: Varied
Injection
Inj. Vol.: 1.0 μ L split (split ratio 150:1)
Liner: Cycloplitter[®] (cat.# 20706)
Inj. Temp.: 275 $^{\circ}$ C
Oven
Oven Temp: 60 $^{\circ}$ C
Carrier Gas H₂, constant flow
Linear Velocity: 44cm/sec.
Detector FID @ 275 $^{\circ}$ C
Make-up Gas
Flow Rate: 30mL/min.
Make-up Gas
Type: N₂
Instrument Agilent/HP6890 GC