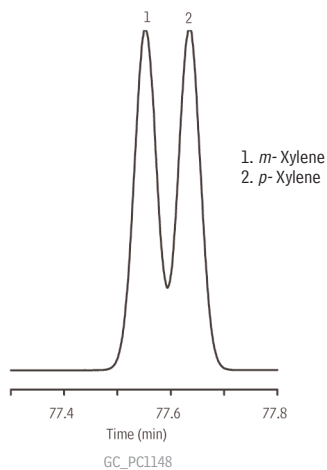


***m*- and *p*-Xylene on Rtx®-DHA-150**



Column Rtx®-DHA-150, 150 m, 0.25 mm ID, 1.0 μ m (cat.# 10149)
Sample *m*- and *p*-Xylene
Diluent: Methylene chloride
Injection
Inj. Vol.: 1.0 μ L split (split ratio 50:1)
Liner: 4.0 mm ID Cyclo Inlet Liner (cat.# 20706)
Inj. Temp.: 275 °C
Oven
Oven Temp: 35 °C (hold 60 min.) to 200 °C at 5 °C/min. (hold 10 min.)
Carrier Gas H₂, constant flow
Linear Velocity: 44 cm/sec.
Detector FID @ 275 °C
Make-up Gas
Flow Rate: 30 mL/min.
Make-up
Gas Type: N₂
Instrument Agilent/HP6890 GC

Restek Corporation 110 Benner Circle Bellefonte, PA 16823
814-353-1300 • 800-356-1688 • Fax: 814-353-1309 • www.restek.com