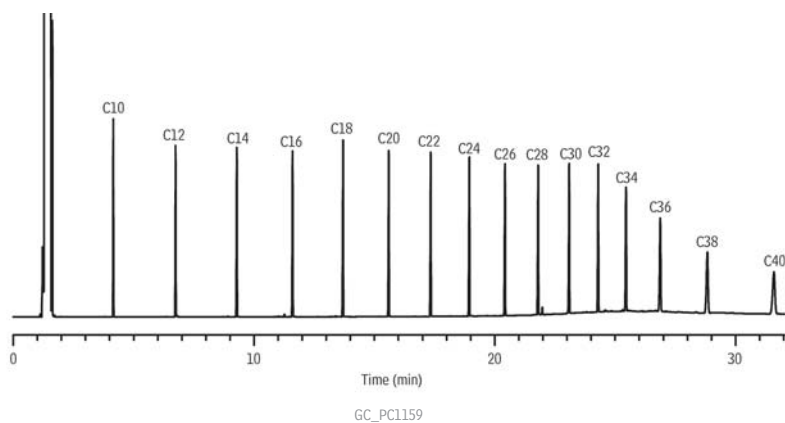


Crude Oil on Rxi®-5HT



Peaks

1. C10	9. C26
2. C12	10. C28
3. C14	11. C30
4. C16	12. C32
5. C18	13. C34
6. C20	14. C36
7. C22	15. C38
8. C24	16. C40

Column

Rxi®-5HT, 30 m, 0.32 mm ID, 0.25 μ m (cat.# 13924)

using Rxi® Guard Column 2 m, 0.53 mm ID (cat.# 10054)

System Performance Test Standard Mixture of *n*-Alkanes (cat.# 31678)

Sample

Diluent:

Hexane

Conc.:

50 μ g/mL

Injection

Inj. Vol.:

1 μ L cold on-column

Temp. Program:

53°C to 300°C at 10°C/min. (hold 20 min.)

Oven

Oven Temp:

50 °C to 300 °C at 10 °C/min. (hold 20 min.)

Carrier Gas

Linear Velocity:

H₂, constant flow
40 cm/sec. @ 50 °C

Dead Time:

1.25 min. @ 50 °C

Detector

Make-up Gas

FID @ 330 °C

Flow Rate:

30 mL/min.

Make-up

Gas Type:

N₂

Data Rate:

20 Hz

Instrument

Agilent/HP6890 GC