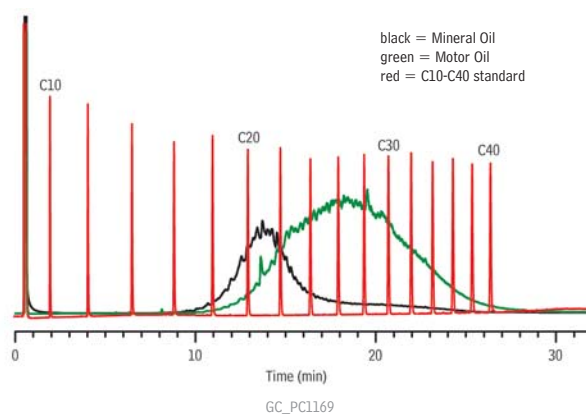


## Mineral Oil and Motor Oil on Rtx®-Mineral Oil



**Column** Rtx®-Mineral Oil, 15 m, 0.32 mm ID, 0.15  $\mu$ m (cat.# 18074)  
using IP Deactivated Guard Column 2 m, 0.53 mm ID (cat.# 10047)

**Sample** custom mineral oil/motor oil mix

**Diluent:** hexane

**Conc.:** 500  $\mu$ g/mL

**Injection**

Inj. Vol.: 0.5  $\mu$ L cold on-column

Temp. Program: 53°C to 300°C at 10°C/min. (hold 20 min.)

**Oven**

Oven Temp: 50 °C to 300 °C at 10 °C/min. (hold 20 min.)

**Carrier Gas** H<sub>2</sub>, constant flow

Linear Velocity: 40 cm/sec. @ 50 °C

Dead Time: 0.625 min. @ 50 °C

**Detector** FID @ 330 °C

Make-up

Gas Flow Rate: 30 mL/min.

Make-up

Gas Type: N<sub>2</sub>

Data Rate: 20 Hz

**Instrument** Agilent/HP6890 GC

Restek Corporation 110 Benner Circle Bellefonte, PA 16823  
814-353-1300 • 800-356-1688 • Fax: 814-353-1309 • www.restek.com