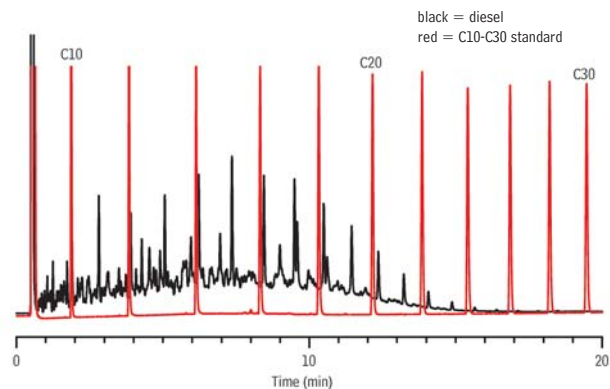


Diesel on Rtx®-Mineral Oil



GC_PC1171

Column Rtx®-Mineral Oil, 15 m, 0.32 mm ID, 0.15 μ m (cat.# 18074)
using IP Deactivated Guard Column 2 m, 0.53 mm ID (cat.# 10047)

Sample diesel fuel #2 composite (cat.# 31093)

Diluent: methylene chloride

Conc.: 5,000 μ g/mL diluted to 500 μ g/mL

Injection

Inj. Vol.: 0.5 μ L cold on-column

Temp. Program: 53°C to 300°C at 10°C/min. (hold 20 min.)

Oven

Oven Temp: 50 °C to 300 °C at 10 °C/min. (hold 20 min.)

Carrier Gas H₂, constant flow

Linear Velocity: 40 cm/sec. @ 50 °C

Dead Time: 0.625 min. @ 50 °C

Detector FID @ 330 °C

Make-up

Gas Flow Rate: 30 mL/min.

Make-up

Gas Type: N₂

Data Rate: 20 Hz

Instrument Agilent/HP6890 GC

Restek Corporation 110 Benner Circle Bellefonte, PA 16823
814-353-1300 • 800-356-1688 • Fax: 814-353-1309 • www.restek.com