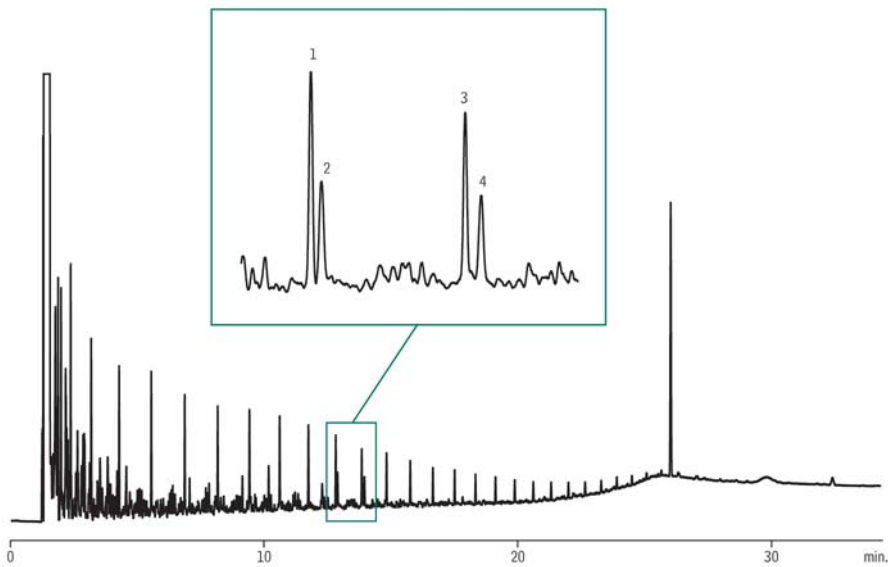


Midrange Crude on Rxi®-5HT



GC_PC1172

Peaks

1. C17
2. Pristane
3. C18
4. Phytane

Column

Rxi®-5HT, 30 m, 0.32 mm ID, 0.10 μ m (cat.# 13909)
using retention gap 2 m, 0.53 mm ID,

Sample

Midrange crude
500 μ g/mL

Injection

Inj. Vol.: 1.0 μ L cold on-column

Oven

Oven Temp: 50 °C to 300 °C at 10 °C/min. (hold 10 min.)

Carrier Gas

H₂, constant flow

Linear Velocity:

40 cm/sec.

Detector

FID @ 330 °C

Instrument

Agilent/HP6890 GC

Acknowledgement

Sample courtesy of Exxon Mobil Corporation