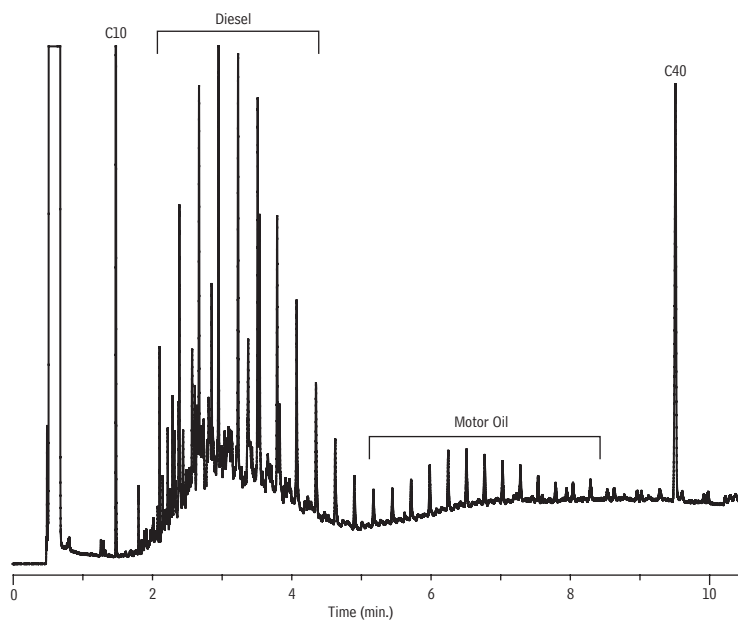


Diesel & Motor Oil on Rtx®-Mineral Oil



GC_PC1180

Peaks	Conc. ($\mu\text{g/mL}$)
1. C10	20
2. Diesel	500
3. Motor Oil	500
4. C40	20

Column Rtx®-Mineral Oil, 15 m, 0.32 mm ID, 0.10 μm (cat.# 18079)
using IP Deactivated Guard Column 10 m, 0.32 mm ID (cat.# 10047)
with aluminum connector

Sample Diesel #2/Motor Oil (cat.# 31682)
Extraction Solvent Stock Solution #2 (cat.# 31680)
Hexane/methylene chloride

Diluent:

Injection

Inj. Vol.: 1.0 μL direct

Inj. Temp.: 58 $^{\circ}\text{C}$

Oven

Oven Temp: 55 $^{\circ}\text{C}$ (hold 1.0 min.) to 380 $^{\circ}\text{C}$ at 100 $^{\circ}\text{C}/\text{min}$. (hold 6.0 min.)

Carrier Gas H_2 , constant flow

Linear Velocity: 40 cm/sec.

Detector FID @ 380 $^{\circ}\text{C}$

Make-up Gas

Flow Rate: 30 mL/min.

Make-up Gas

Type:

Instrument N;

Agilent/HP6890 GC

Notes Direct cool on-column injection, programmed by oven tracking.

Actual guard column length used in application was 2 m.