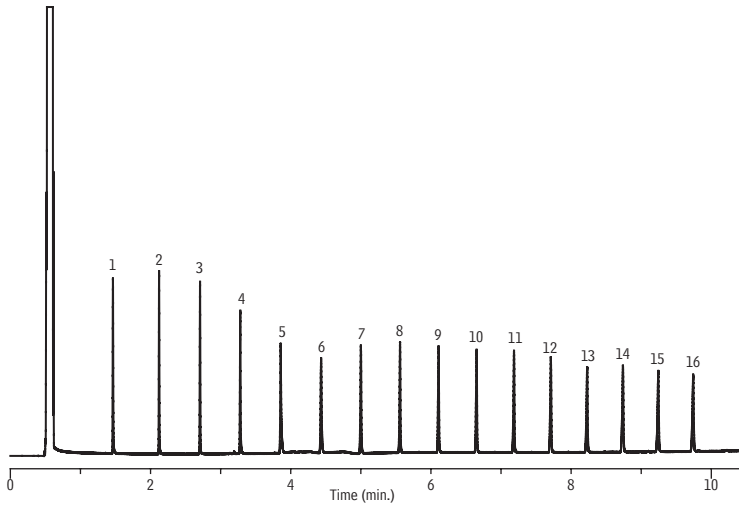


***n*-alkanes (C10-C40) on Rtx®-Mineral Oil**



Peaks	
1. C10	9. C26
2. C12	10. C28
3. C14	11. C30
4. C16	12. C32
5. C18	13. C34
6. C20	14. C36
7. C22	15. C38
8. C24	16. C40

**Column** Rtx®-Mineral Oil, 15 m, 0.32 mm ID, 0.10  $\mu$ m (cat.# 18079)  
using IP Deactivated Guard Column 10 m, 0.32 mm ID (cat.# 10047)  
with aluminum connector

**Sample** System Performance Test Standard Mixture of *n*-alkanes (cat.# 31678)  
**Diluent:** Hexane/methylene chloride  
**Conc.:** 20  $\mu$ g/mL each

**Injection**  
**Inj. Vol.:** 1.0  $\mu$ L direct  
**Inj. Temp.:** 58 °C

**Oven**  
**Oven Temp:** 55 °C (hold 1.0 min.) to 380 °C at 100 °C/min. (hold 6.0 min.)  
**Carrier Gas** H<sub>2</sub>, constant flow  
**Linear Velocity:** 40 cm/sec.

**Detector** FID @ 380 °C  
**Make-up Gas** Make-up Gas  
**Flow Rate:** 30 mL/min.  
**Make-up Gas** Type: N<sub>2</sub>

**Instrument** Agilent/HP6890 GC  
**Notes** Direct cool on-column injection, programmed by oven tracking.

Actual guard column length used in application was 2 m.

GC\_PC1181