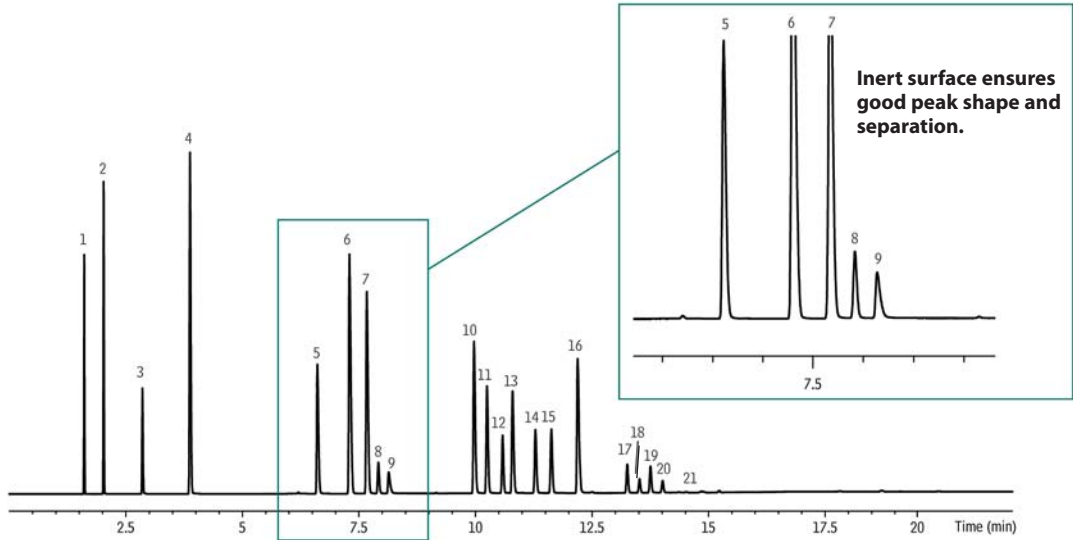


Refinery Gas on MXT®-Alumina BOND/Na<sub>2</sub>SO<sub>4</sub>



GC\_PC1183

- Peaks**
1. Methane
  2. Ethane
  3. Ethylene
  4. Propane
  5. Propylene
  6. Isobutane
  7. *n*-Butane
  8. Propadiene
  9. Acetylene
  10. *trans*-2-Butene
  11. 1-Butene

12. Isobutylene
13. *cis*-2-Butene
14. Isopentane
15. *n*-Pentane
16. 1,3-Butadiene
17. *trans*-2-Pentene
18. 2-Methyl-2-butene
19. 1-Pentene
20. *cis*-2-Pentene
21. Hexanes

**Column** MXT®-Alumina BOND/Na<sub>2</sub>SO<sub>4</sub>, 30 m, 0.53 mm ID, 10 μm (cat.# 79714)  
**Sample** Refinery gas  
**Injection**  
 Inj. Vol.: 10 μL split  
 Liner: 2mm split  
 Inj. Temp.: 45 °C  
 Split Vent  
 Flow Rate: 80 mL/min.  
**Oven**  
 Oven Temp: 45 °C (hold 1 min.) to 200 °C at 10 °C/min. (hold 8.5 min.)  
**Carrier Gas** He, constant pressure (10 psi, 68.9 kPa)  
 Linear Velocity: 31 cm/sec. @ 45 °C  
**Detector** FID @ 200 °C