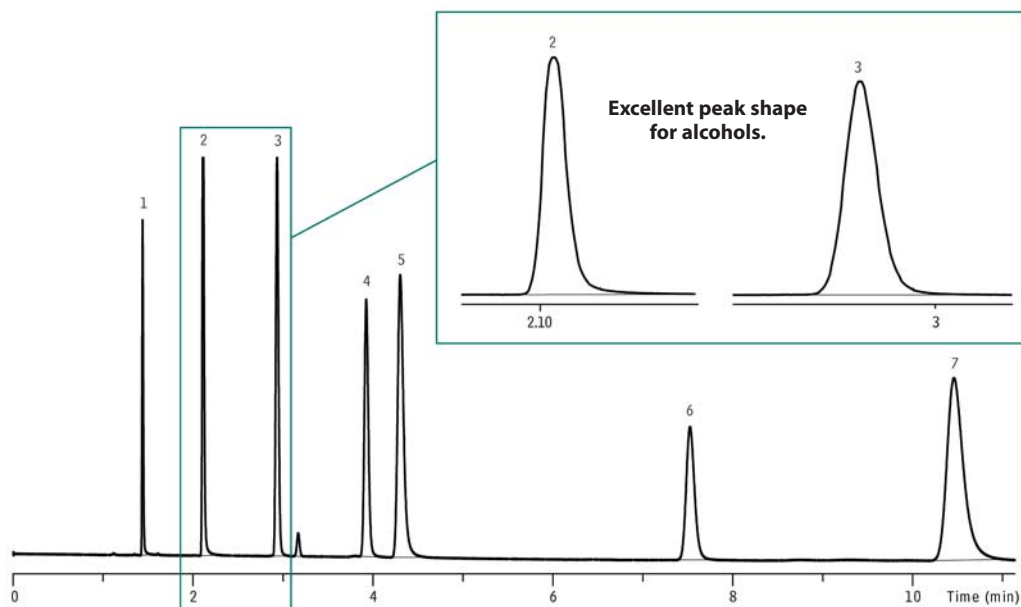


## Solvents on MXT®-Q-BOND



GC\_PC1184

- Peaks**
1. Methane
  2. Methanol
  3. Ethanol
  4. Acetone
  5. Diethylether
  6. Ethyl acetate
  7. Hexane

**Column** MXT®-Q-BOND, 30 m, 0.53 mm ID, 20  $\mu$ m (cat.# 79716)  
**Sample** Solvent mix  
**Injection** split  
**Inj. Temp.:** 250 °C  
**Split Vent**  
**Flow Rate:** 200 mL/min.  
**Oven**  
**Oven Temp:** 150 °C  
**Carrier Gas** H<sub>2</sub>, constant flow  
**Linear Velocity:** 40 cm/sec.  
**Detector** FID  
**Instrument** Agilent/HP6890 GC