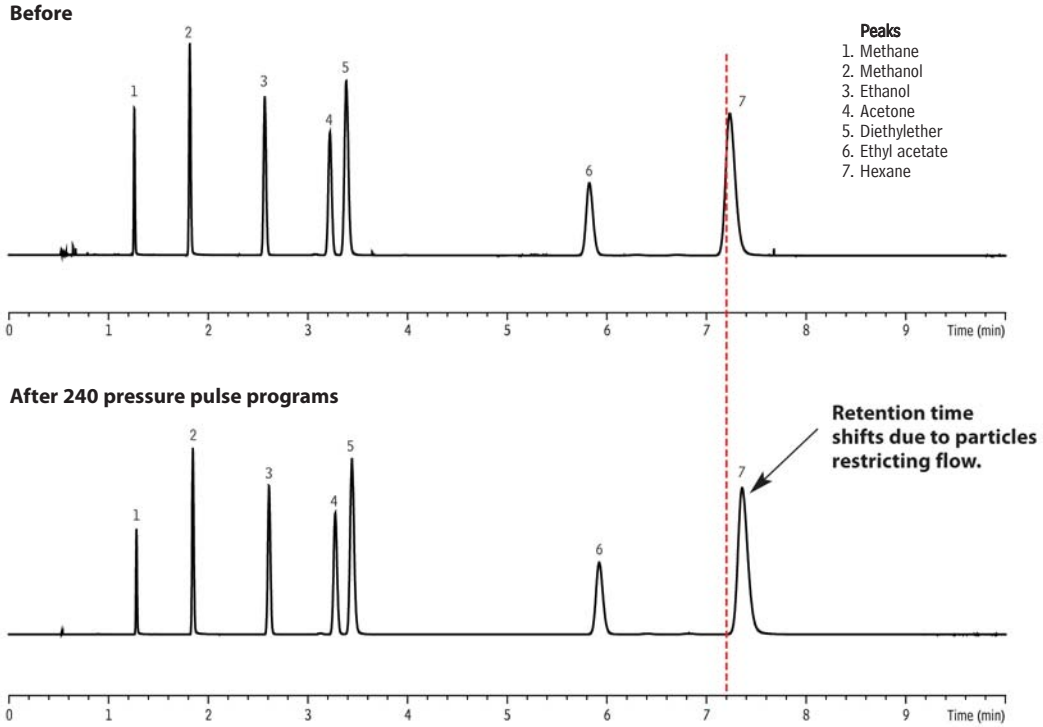


Test Chromatograms Before and After Pressure Pulsing; Vendor V Metal Q PLOT



GC_PC1185

Column	Vendor V Metal Q PLOT, 25 m, 0.53 mm ID
Sample	Solvent mix
Injection	
Inj. Vol.:	1.0 μ L split
Inj. Temp.:	250 $^{\circ}$ C
Split Vent	
Flow Rate:	150 mL/min.
Oven	
Oven Temp:	150 $^{\circ}$ C
Carrier Gas	H ₂ , constant pressure (4 psi, 27.6 kPa)
Detector	FID @ 250 $^{\circ}$ C
Instrument	Agilent/HP6890 GC
Notes	Pressure pulse test = 240 cycles