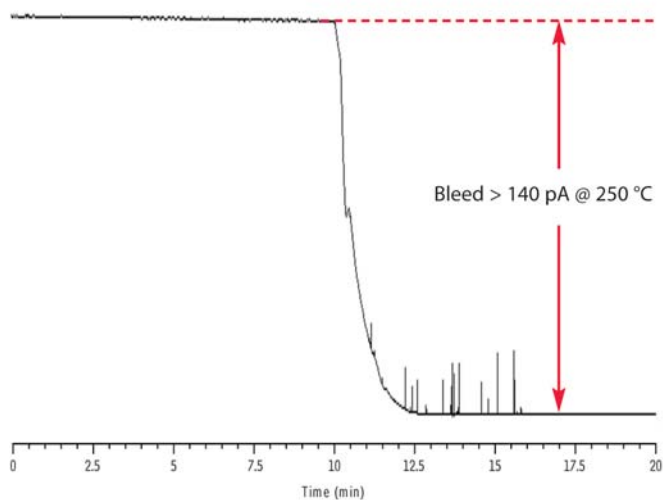


Thermal Stability Comparison of Metal Q Type Porous Polymer Columns

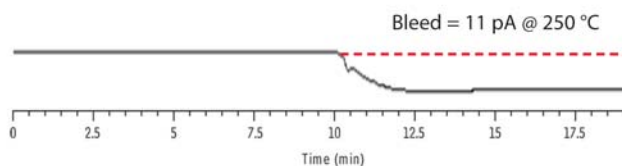
Vendor V, Q type PLOT



MXT®-Q-BOND PLOT

New low bleed MXT®-Q-BOND PLOT columns

- Faster stabilization
- Better sensitivity



GC_PC1187

Column See notes for column descriptions.
Inj. Temp.: 250 °C
Split Vent
Flow Rate: 150 mL/min.
Oven
Oven Temp: 250 °C (hold 10 min.) to 40 °C at 50 °C/min.
Carrier Gas H₂, constant pressure (4 psi, 27.6 kPa)
Detector FID @ 250 °C
Instrument Agilent/HP6890 GC
Notes Columns tested:
 Vendor V, Metal Q type column
 Restek MXT®-Q-BOND

Columns were conditioned at 250 °C for the same length of time, and then bleed was compared to demonstrate the temperature stability of each column. Lower bleed columns allow higher sensitivities and faster stabilization times.