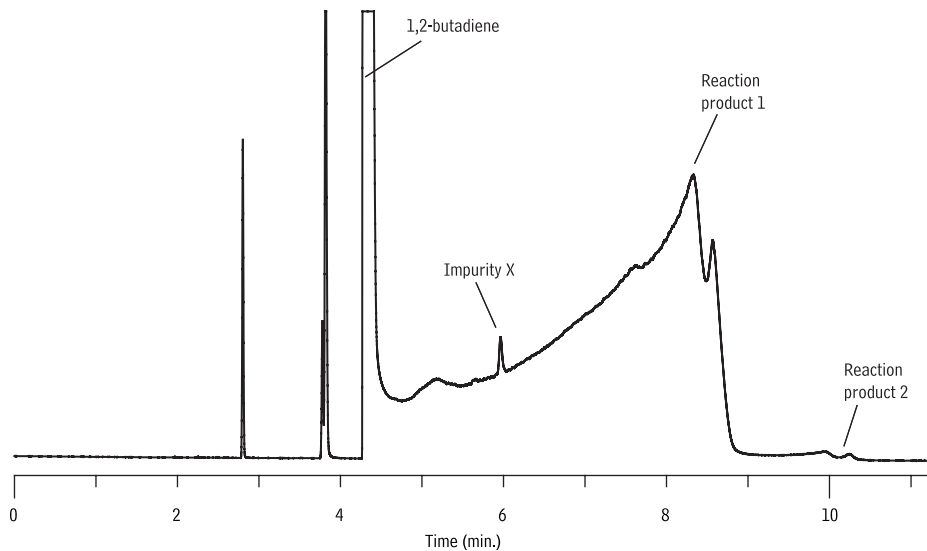


2-Butadiene on Na₂SO₄ Deactivated Alumina PLOT Column

Column Alumina PLOT(Na₂SO₄) 50m, 0.32mm ID
Injection
Inj. Vol: 40 μ l split (split ratio 30:1)
Oven
Oven Temp: 150 $^{\circ}$ C
Carrier Gas H₂, constant pressure (23 psi, 158.6 kPa)
Temp: 150 $^{\circ}$ C
Detector FID
Notes Major decomposition of 2-butadiene is seen due to reactivity with a Na₂SO₄ deactivated alumina PLOT column



GC_PCL196