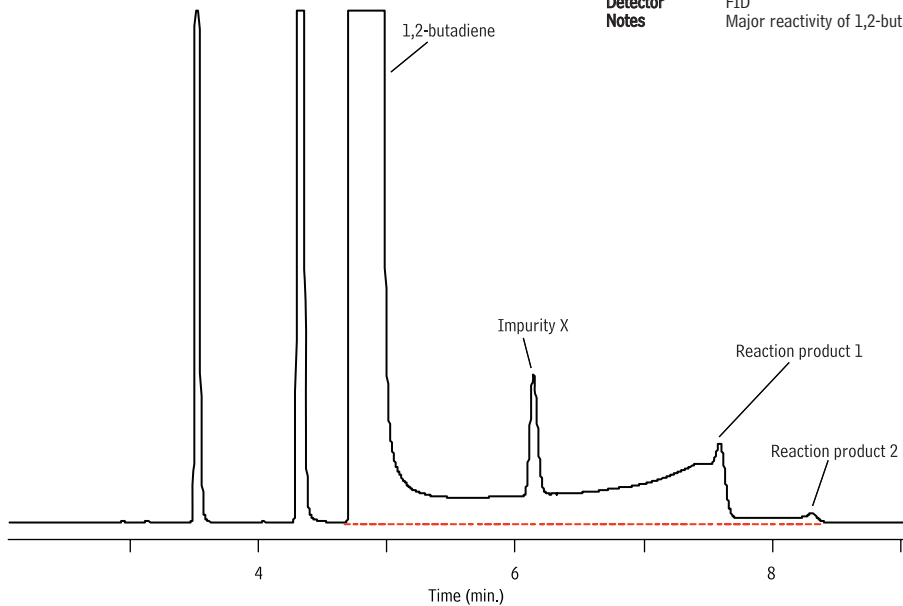


## 1,2-Butadiene on Commercially Available KCl Deactivated Alumina PLOT Column

**Column** CP-Al<sub>2</sub>O<sub>3</sub>/KCl, 50 m x 0.32 mm ID  
**Injection**  
Inj. Vol.: 40  $\mu$ L split (split ratio 30:1)  
**Oven**  
Oven Temp.: 150  $^{\circ}$ C  
**Carrier Gas** H<sub>2</sub>, constant pressure (23 psi, 158.6 kPa)  
Temp.: 150  $^{\circ}$ C  
**Detector** FID  
**Notes** Major reactivity of 1,2-butadiene on a KCl deactivated alumina PLOT column.



GC\_PC1197