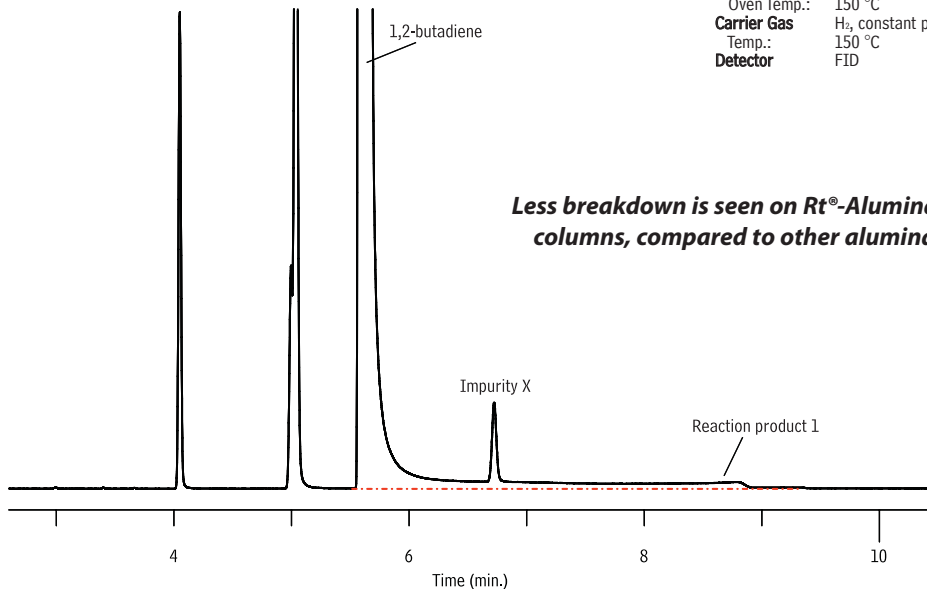


1,2-Butadiene on Rt[®]-Alumina BOND/CFC

Column Rt[®]-Alumina BOND/CFC, 50 m, 0.32 mm ID, 5.0 μ m (cat.# 565682)
Injection
Inj. Vol.: 40 μ L split (split ratio 30:1)
Oven
Oven Temp.: 150 °C
Carrier Gas H₂, constant pressure (23 psi, 158.6 kPa)
Temp.: 150 °C
Detector FID



Less breakdown is seen on Rt[®]-Alumina BOND/CFC columns, compared to other alumina columns.

GC_PC1198