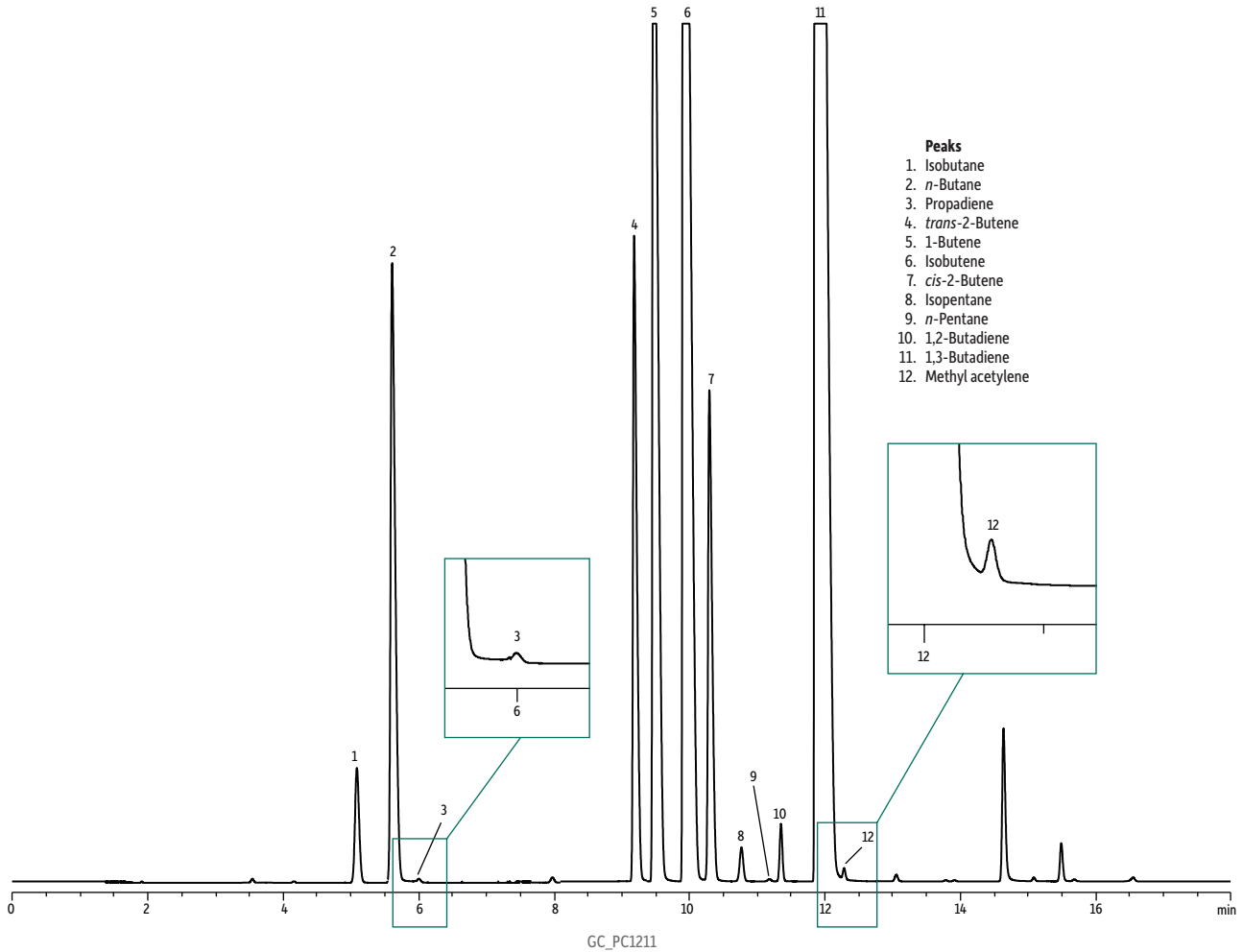


# 1,3-Butadiene on Rt®-Alumina BOND/MAPD (Purity Analysis)



- Peaks**
1. Isobutane
  2. *n*-Butane
  3. Propadiene
  4. *trans*-2-Butene
  5. 1-Butene
  6. Isobutene
  7. *cis*-2-Butene
  8. Isopentane
  9. *n*-Pentane
  10. 1,2-Butadiene
  11. 1,3-Butadiene
  12. Methyl acetylene

<b>Column</b>	Rt®-Alumina BOND/MAPD, 50 m, 0.53 mm ID, 10.0 µm (cat.# 19778)
<b>Sample</b>	Crude 1,3-butadiene
<b>Injection</b>	
Inj. Vol.:	10 µL split
Liner:	2.0 mm ID straight inlet liner (cat.# 20712)
Inj. Temp.:	200 °C
Split Vent	
Flow Rate:	100 mL/min.
<b>Oven</b>	
Oven Temp.:	70 °C (hold 5 min.) to 200 °C at 10 °C/min. (hold 0 min.)
<b>Carrier Gas</b>	He, constant pressure (20 psi, 137.9 kPa)
<b>Detector</b>	FID @ 250 °C
Make-up Gas	
Flow Rate:	30 mL/min.
Make-up	
Gas Type:	N <sub>2</sub>
Data Rate:	20 Hz
<b>Instrument</b>	HP5890 GC