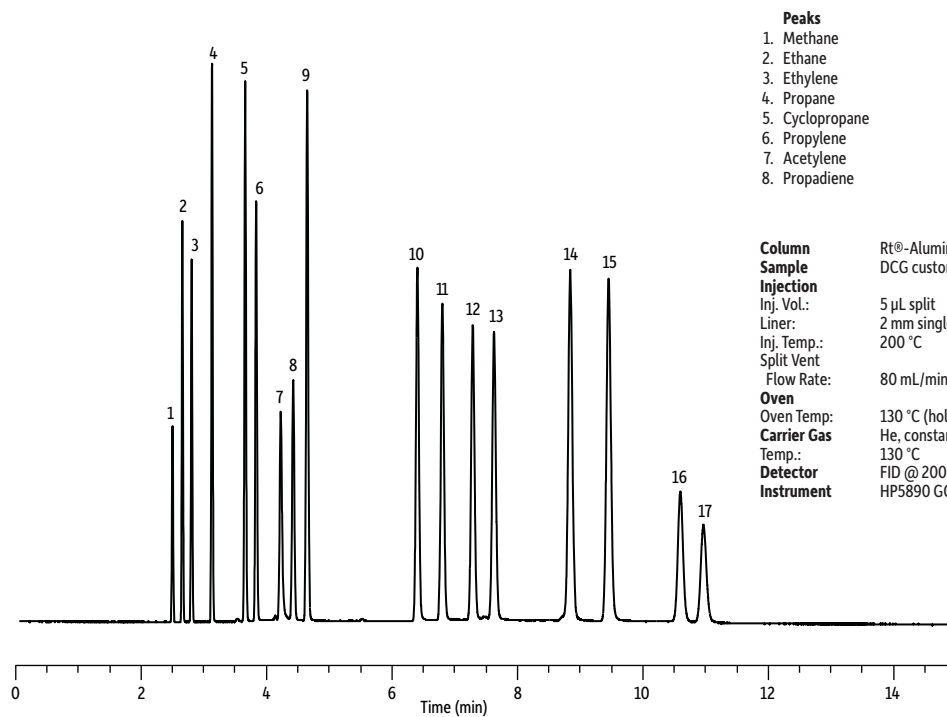


C1-C5 Hydrocarbons on Rt®-Alumina BOND/MAPD



- Peaks**
- | | |
|-----------------|----------------------------|
| 1. Methane | 9. <i>n</i> -Butane |
| 2. Ethane | 10. <i>trans</i> -2-Butene |
| 3. Ethylene | 11. 1-Butene |
| 4. Propane | 12. Isobutene |
| 5. Cyclopropane | 13. <i>cis</i> -2-Butene |
| 6. Propylene | 14. Isopentane |
| 7. Acetylene | 15. <i>n</i> -Pentane |
| 8. Propadiene | 16. 1,3-Butadiene |
| | 17. Methyl acetylene |

Column Rt®-Alumina BOND/MAPD, 50 m, 0.53 mm ID, 10 µm (cat.# 19778)
Sample DCG custom standard (cat.# 547267)
Injection
Inj. Vol.: 5 µL split
Liner: 2 mm single taper (cat.# 20795)
Inj. Temp.: 200 °C
Split Vent
Flow Rate: 80 mL/min
Oven
Oven Temp: 130 °C (hold 15 min)
Carrier Gas He, constant pressure (4.4 psi, 30.3 kPa)
Temp.: 130 °C
Detector FID @ 200 °C
Instrument HP5890 GC

GC_PC1213