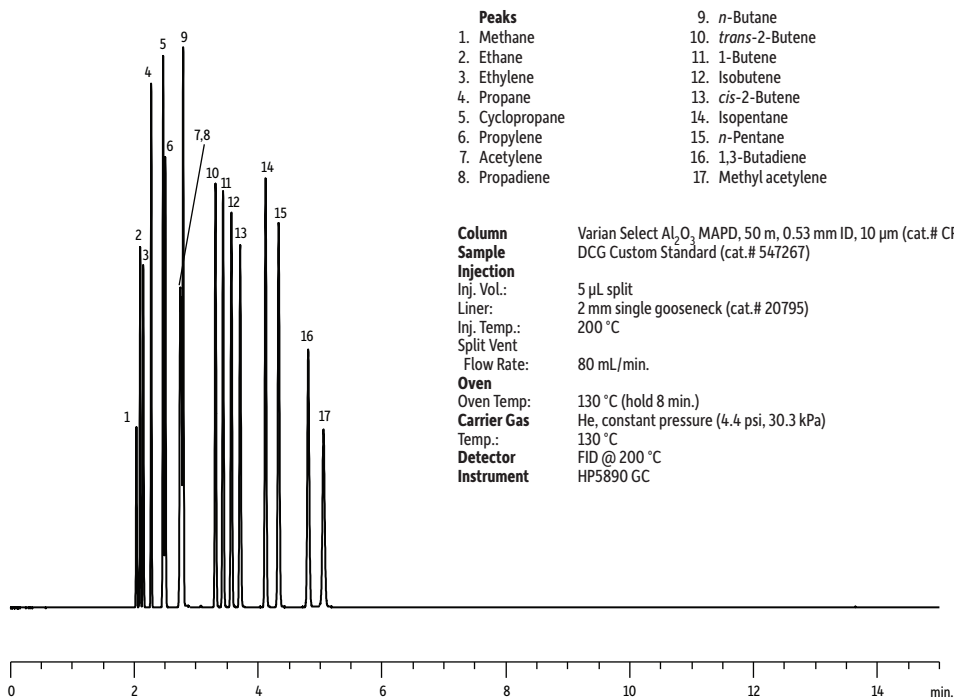


# C1-C5 Hydrocarbons on Varian Select Al<sub>2</sub>O<sub>3</sub> MAPD



- | Peaks           |                            |
|-----------------|----------------------------|
| 1. Methane      | 9. <i>n</i> -Butane        |
| 2. Ethane       | 10. <i>trans</i> -2-Butene |
| 3. Ethylene     | 11. 1-Butene               |
| 4. Propane      | 12. Isobutene              |
| 5. Cyclopropane | 13. <i>cis</i> -2-Butene   |
| 6. Propylene    | 14. Isopentane             |
| 7. Acetylene    | 15. <i>n</i> -Pentane      |
| 8. Propadiene   | 16. 1,3-Butadiene          |
|                 | 17. Methyl acetylene       |

<b>Column</b>	Varian Select Al <sub>2</sub> O <sub>3</sub> MAPD, 50 m, 0.53 mm ID, 10 μm (cat.# CP7432)
<b>Sample</b>	DCG Custom Standard (cat.# 547267)
<b>Injection</b>	
Inj. Vol.:	5 μL split
Liner:	2 mm single gooseneck (cat.# 20795)
Inj. Temp.:	200 °C
Split Vent	
Flow Rate:	80 mL/min.
<b>Oven</b>	
Oven Temp:	130 °C (hold 8 min.)
<b>Carrier Gas</b>	He, constant pressure (4.4 psi, 30.3 kPa)
Temp.:	130 °C
<b>Detector</b>	FID @ 200 °C
<b>Instrument</b>	HP5890 GC

GC\_PC1214