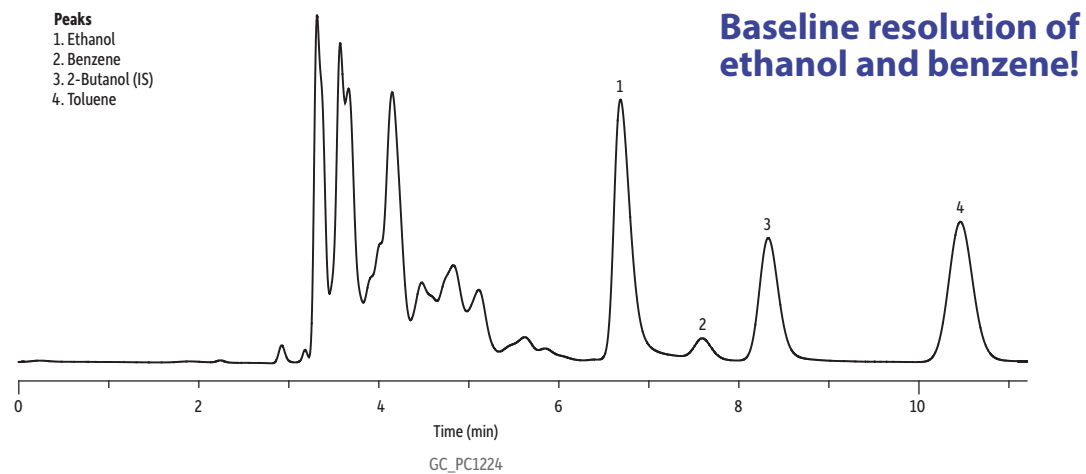


Gasoline Containing Ethanol on D3606 Application Column Set by ASTM D3606-10 (Modified)



Column D3606 application column (2 column set). Column 1: 6' (1.8 m), 1/8" OD, 2.0 mm ID, nonpolar Rtx®-1; Column 2: 16' (4.9 m), 1/8" OD, 2.0 mm ID, proprietary packing material (cat.# 83606-800)

Sample Ethanol-containing gasoline with internal standard (IS)

Diluent:

Injection

Inj. Vol.: 1.5 µL Direct

Inj. Temp.: 150 °C Oven

Oven

Oven Temp: 135 °C (hold 12 min.)

Carrier Gas He, constant flow

Flow Rate: 20.0 mL/min.

Detector TCD @ 200 °C

Notes 2.38 minute backflush (must be determined for each GC system).

Restek Corporation 110 Benner Circle Bellefonte, PA 16823
1-814-353-1300 • 1-800-356-1688 • Fax: 1-814-353-1309 • www.restek.com