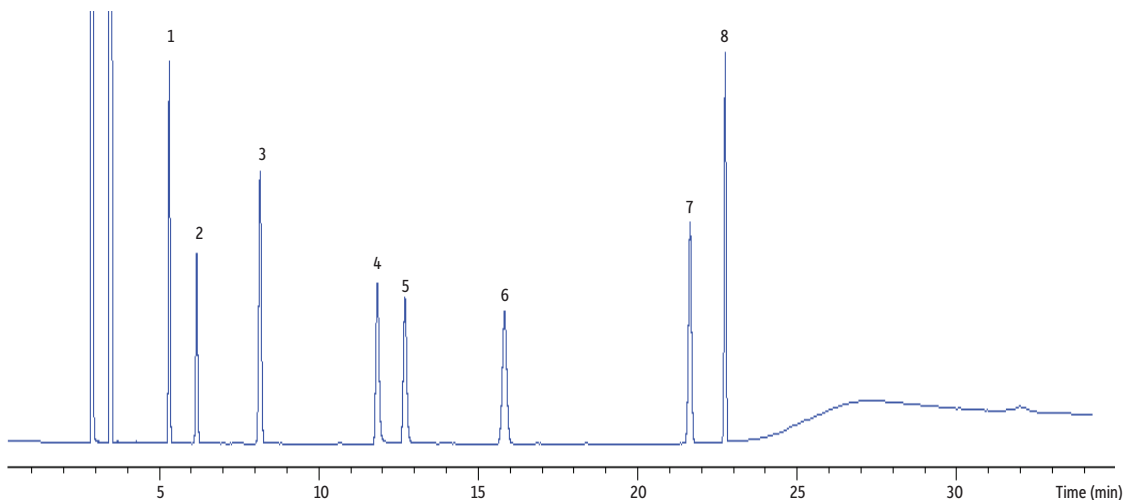


Volatile Amine Test Mix on Rtx-Volatile Amine (60 m x 0.32 mm ID)

Peaks	tr (min)	Peaks	tr (min)
1. Pyridine	5.29	5. Diethanolamine	12.69
2. 1,2-Butanediol	6.15	6. 2-Nonanol	15.81
3. Nonane	8.14	7. 2,6-Dimethylaniline	21.62
4. Diethylenetriamine	11.82	8. Dodecane	22.73



GC_PC1228

Column Rtx-Volatile Amine, 60 m, 0.32 mm ID (cat.# 18078)
Sample Volatile amine column test mix (cat.# 35008)
Diluent: Methanol:dichloromethane (50:50)
Conc.: 900-1,800 µg/mL
Injection
Inj. Vol.: 1 µL split (split ratio 17.8:1)
Liner: Premium 4 mm single taper w/wool (cat.# 23303)
Inj. Temp.: 250 °C
Split Vent
Flow Rate: 60 mL/min

Oven
Oven Temp.: 160 °C (hold 21 min) to 290 °C at 40 °C/min (hold 10 min)
Carrier Gas He, constant flow
Flow Rate: 3.4 mL/min
Detector FID @ 300 °C
Make-up Gas
Flow Rate: 30 mL/min
Make-up Gas
Type: N₂
Data Rate: 50 Hz
Instrument Agilent/HP6890 GC



© 2021 Restek Corporation. All rights reserved.
www.restek.com

Restek patents and trademarks are the property of Restek Corporation. (See www.restek.com/Patents-Trademarks for full list.) Other trademarks in Restek literature or on its website are the property of their respective owners. Restek registered trademarks are registered in the U.S. and may also be registered in other countries.