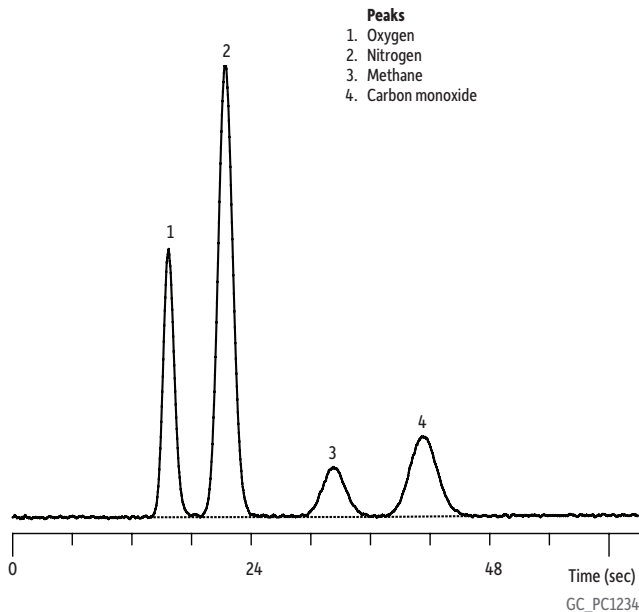


# Permanent Gases on MXT -Molsieve 5A (Micropacked)



<b>Column</b>	MXT -Molsieve 5A, 80/100 mesh, 1 m, 0.53 mm ID (cat.# custom)
<b>Sample</b>	Permanent gases
<b>Conc.:</b>	2-5% in helium
<b>Injection</b>	
<b>Inj. Vol.:</b>	15 $\mu$ L split (split ratio 30:1)
<b>Oven</b>	
<b>Oven Temp:</b>	120 $^{\circ}$ C
<b>Carrier Gas</b>	He, constant pressure (26 psi, 179.3 kPa)
<b>Detector</b>	$\mu$ -TCD