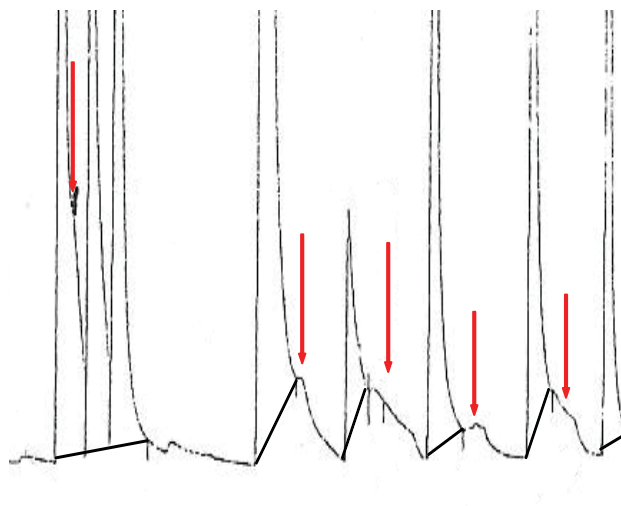


Short-Chain Amine Peaks Broaden, Tail, and Split When Analyzed on Typical Volatile Amine Columns



GC_PC1242

Column	Conventional volatile amine column, 60 m, 32 mm ID
Sample	Short-chain amines
Diluent:	Water
Injection	
Inj. Vol.:	1 μ L split (split ratio 15:1)
Inj. Temp.:	220 °C
Split Vent	
Flow Rate:	30 mL/min
Oven	
Oven Temp:	40 °C (hold 10 min) to 250 °C at 20 °C/min (hold 10 min)
Carrier Gas	H ₂ , constant flow
Flow Rate:	2 mL/min
Linear Velocity:	35 cm/sec
Detector	FID @ 250 °C
Instrument	Agilent/HP6890 GC
Acknowledgement	Courtesy of Gilbert Baele, Taminco (Antwerp, Belgium)

Restek Corporation 110 Benner Circle Bellefonte, PA 16823
1-814-353-1300 • 1-800-356-1688 • Fax: 1-814-353-1309 • www.restek.com