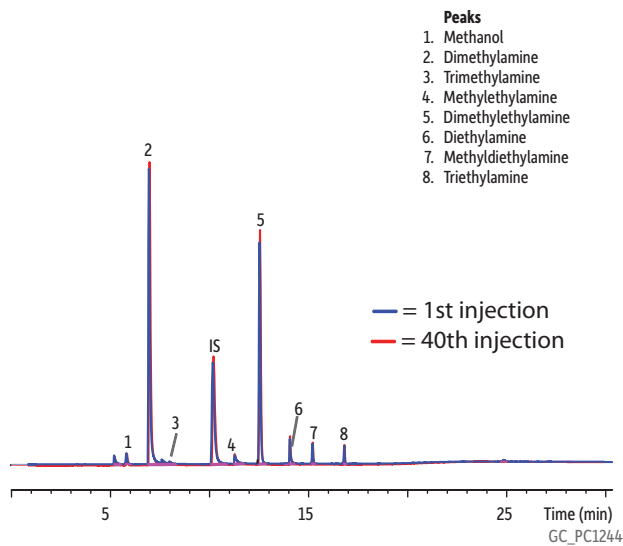


## Stability Overlay: 1<sup>st</sup> and 40<sup>th</sup> Injections of Short-Chain Amines in Water on Rtx<sup>®</sup>-Volatile Amine



**Column** Rtx<sup>®</sup>-Volatile Amine, 60 m, 0.32 mm ID (cat.# 18078)  
**Sample** Short-chain amines  
**Diluent:** Water  
**Injection**  
 Inj. Vol.: 1 µL split (split ratio 15:1)  
 Inj. Temp.: 220 °C  
 Split Vent  
 Flow Rate: 30 mL/min  
**Oven**  
 Oven Temp: 40 °C (hold 10 min) to 250 °C at 20 °C/min (hold 10 min)  
**Carrier Gas**  
 Flow Rate: 2 mL/min  
 Linear Velocity: 35 cm/sec  
**Detector** FID @ 250 °C  
**Instrument** Agilent/HP6890 GC  
**Acknowledgement** Courtesy of Gilbert Baele, Taminco (Antwerp, Belgium)

Restek Corporation 110 Benner Circle Bellefonte, PA 16823  
 1-814-353-1300 • 1-800-356-1688 • Fax: 1-814-353-1309 • www.restek.com