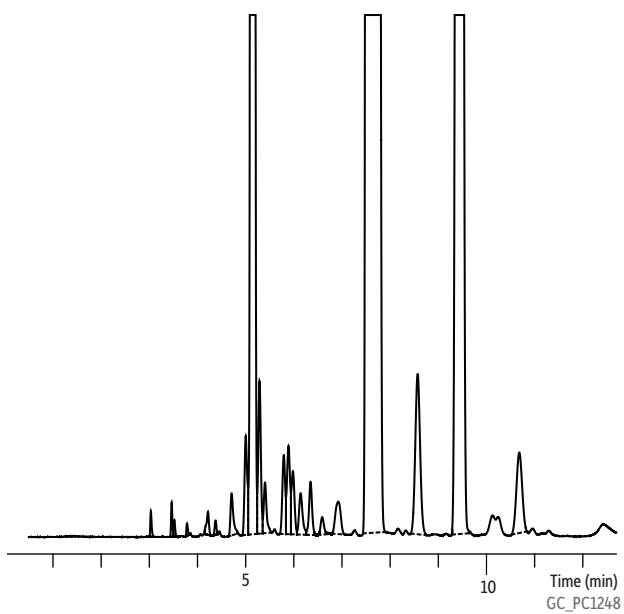


Impurities in Triethylamine on Rtx[®]-Volatile Amine



Column Rtx[®]-Volatile Amine, 60 m, 0.32 mm ID (cat.# 18078)
Sample Triethylamine
Injection
Inj. Vol.: 1 μ L split (split ratio 15:1)
Inj. Temp.: 250 °C
Oven
Oven Temp: 120 °C
Carrier Gas He, constant flow
Flow Rate: 2 mL/min
Detector FID @ 250 °C
Instrument Agilent/HP6890 GC

Restek Corporation 110 Benner Circle Bellefonte, PA 16823
1-814-353-1300 • 1-800-356-1688 • Fax: 1-814-353-1309 • www.restek.com