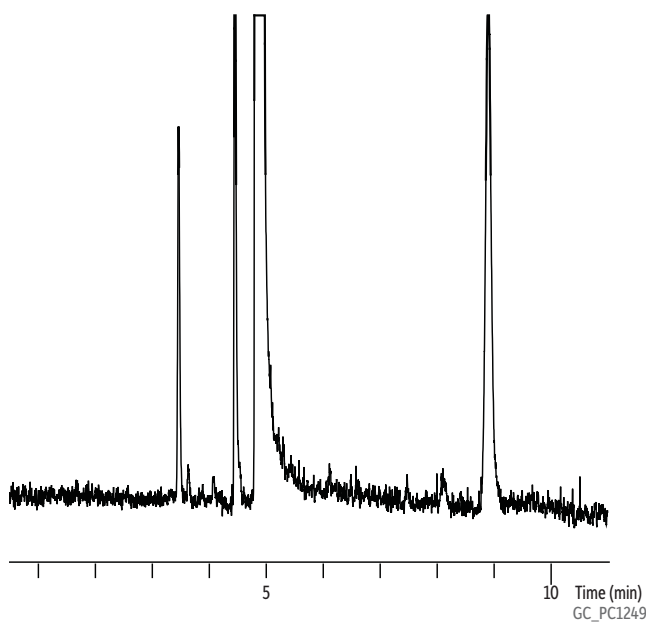


Impurities in Isopropylamine on Rtx®-Volatile Amine



Column	Rtx®-Volatile Amine, 60 m, 0.32 mm ID (cat.# 18078)
Sample	Isopropylamine
Injection	
Inj. Vol.:	1 µL split (split ratio 15:1)
Inj. Temp.:	250 °C
Oven	
Oven Temp:	120 °C
Carrier Gas	He, constant flow
Flow Rate:	2 mL/min
Detector	FID @ 250 °C
Instrument	Agilent/HP6890 GC

Restek Corporation 110 Benner Circle Bellefonte, PA 16823
1-814-353-1300 • 1-800-356-1688 • Fax: 1-814-353-1309 • www.restek.com