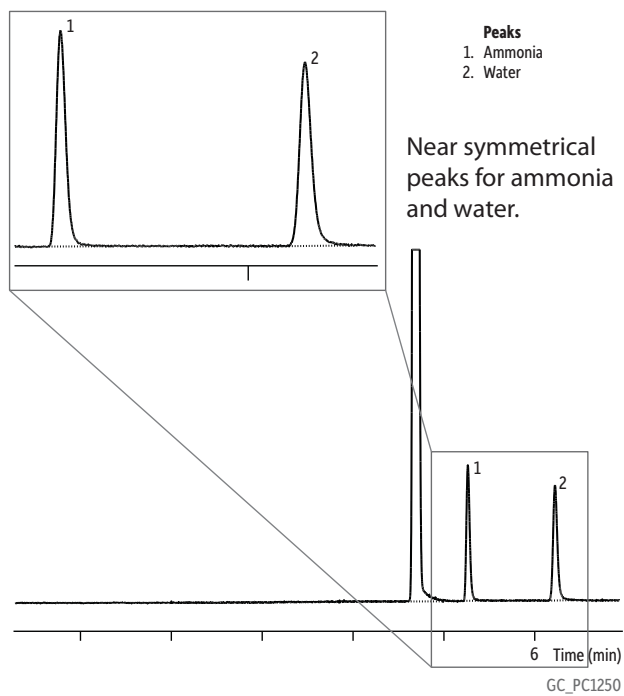


## Ammonia and Water on Rtx®-Volatile Amine



**Column** Rtx®-Volatile Amine, 60 m, 0.32 mm ID (cat.# 18078)  
**Injection** split (split ratio 10:1)  
**Oven**  
**Oven Temp:** 45 °C  
**Carrier Gas** He, constant pressure (22 psi, 151.7 kPa)  
**Detector**  $\mu$ -TCD  
**Instrument** HP5890 GC