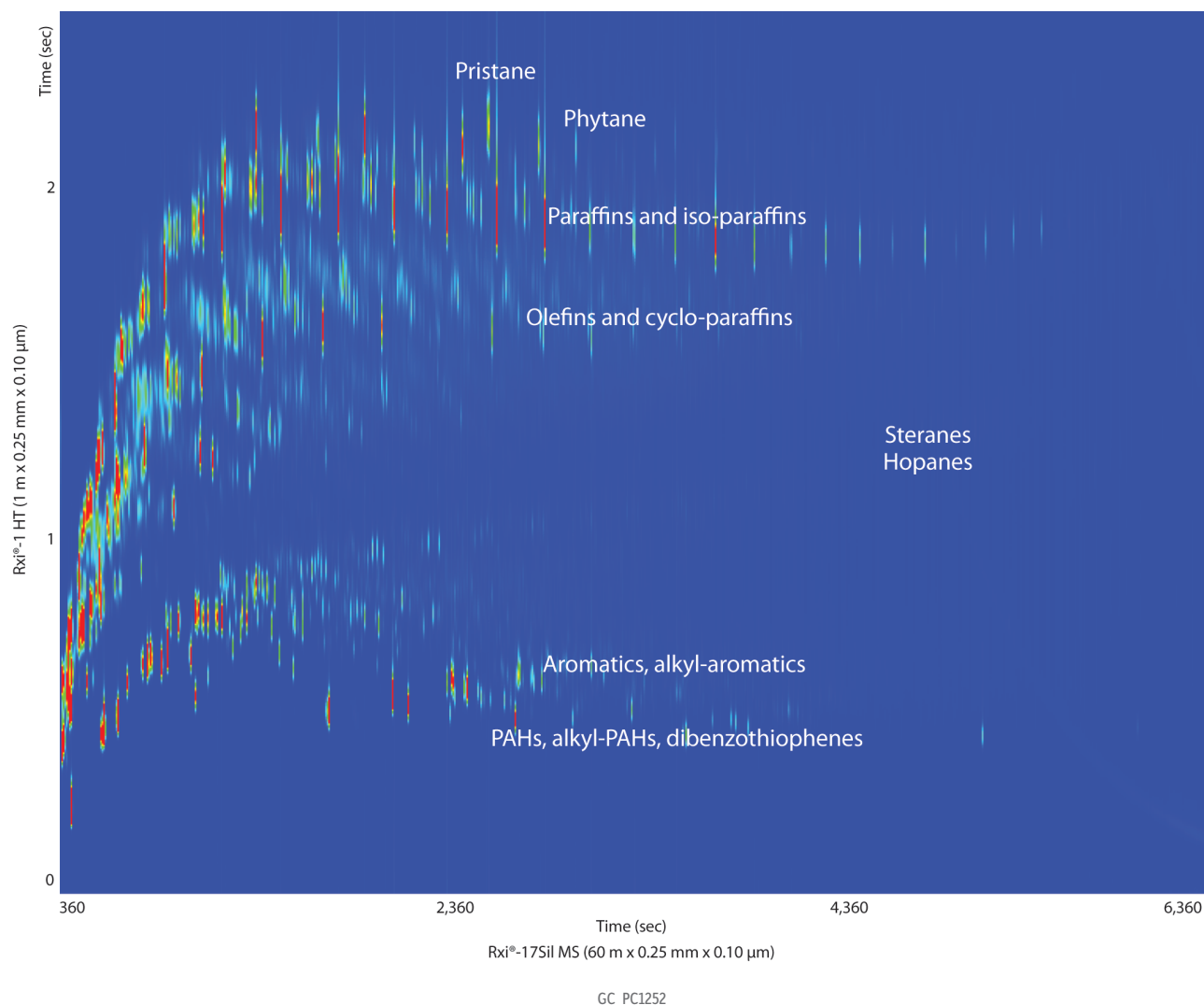


## Riser Pipe Oil from Deepwater Horizon Oil Spill on Rxi-17Sil and Rxi-1HT (GCxGC-TOFMS)



<b>Column</b>	Rxi-17Sil MS 60 m, 0.25 mm ID, 0.10 μm (cat.# custom) Rxi-1HT 1 m, 0.25 mm ID, 0.10 μm (cat.# 13950)	<b>Modulation</b>	Modulator Temp. Offset: 20 °C
<b>Sample</b>	Riser pipe oil from Deepwater Horizon oil spill SV internal standard mix (5 ng/μL) (cat.# 31206)	Second Dimension	Separation Time: 2.8 sec
Diluent:	Methylene chloride	Hot Pulse Time:	1.0 sec
Conc.:	10 mg/mL	Cool Time between	Stages:
<b>Injection</b>			0.4 sec
Inj. Vol.:	1.0 μL split (split ratio 10:1)	<b>Detector</b>	MS
Liner:	Premium 4 mm Precision liner w/wool (cat.# 23305)	Mode:	
Inj. Temp.:	275 °C	Transfer Line Temp.:	300 °C
<b>Oven</b>		Analyzer Type:	TOF
Oven Temp.:	Rxi-17Sil MS: 40 °C (hold 1 min) to 320 °C at 2.5 °C/min (hold 7 min) Rxi-1HT: 45 °C (hold 1 min) to 325 °C at 2.5 °C/min (hold 7 min)	Source Temp.:	250 °C
<b>Carrier Gas</b>	He, corrected constant flow (1 mL/min)	Electron Energy:	-70 eV
		Mass Defect:	100 mu/100 u
		Ionization Mode:	EI
		Acquisition Range:	45 to 550 amu
		Spectral Acquisition	Rate:
			100 spectra/sec
		<b>Instrument</b>	LECO Pegasus 4D GCxGC-TOFMS