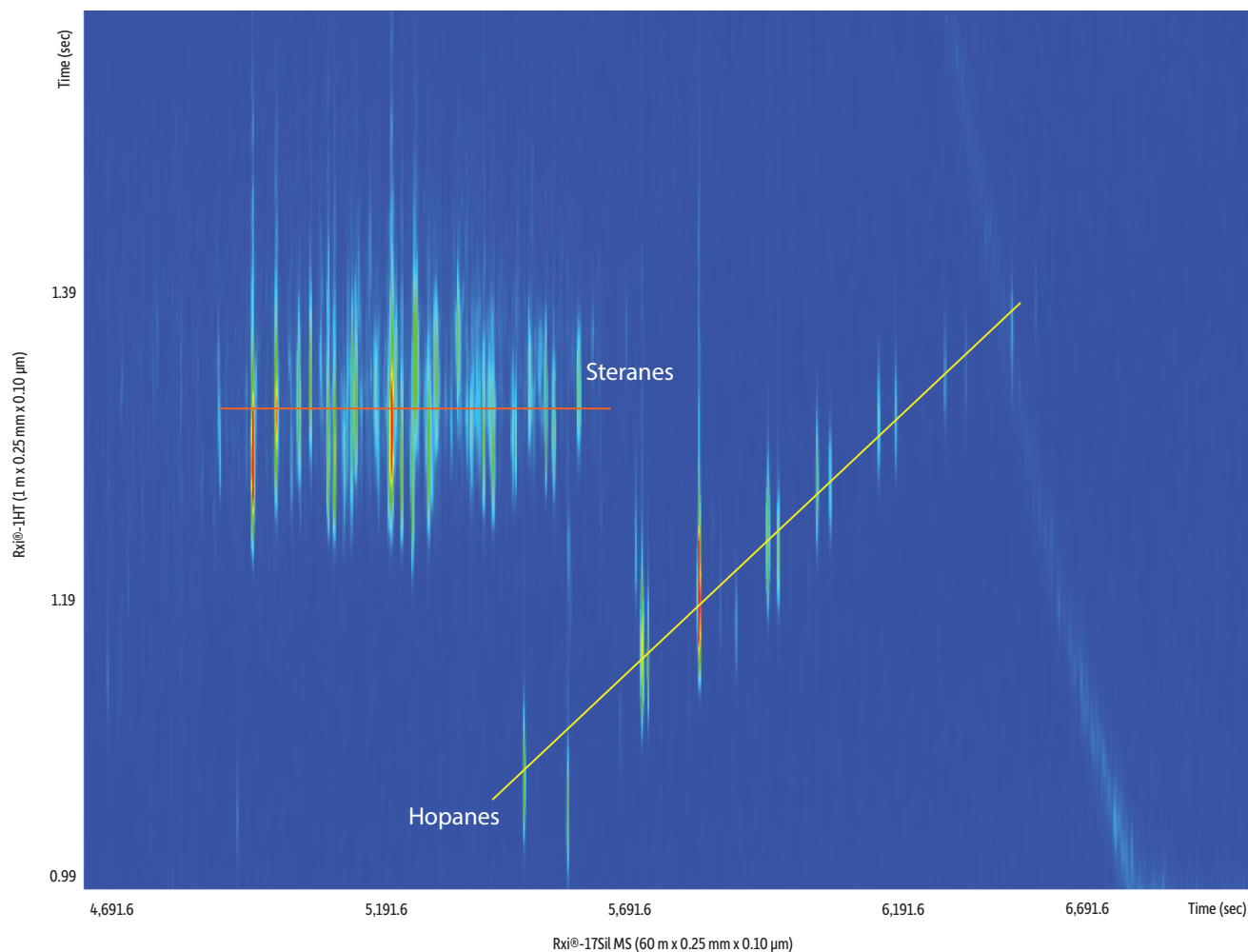


## Steranes and Hopanes on Rxi-17Sil MS and Rxi-1HT (GCxGC-TOFMS, m/z 217 and 191)



<b>Column</b>	Rxi-17Sil MS 60 m, 0.25 mm ID, 0.10 µm (cat.# custom)	<b>Modulation</b>	Modulator Temp. Offset: 20 °C
<b>Sample</b>	Rxi-1HT 1 m, 0.25 mm ID, 0.10 µm (cat.# 13950)	Second Dimension	Separation Time: 2.8 sec
Diluent:	Riser pipe oil from Deepwater Horizon oil spill	Hot Pulse Time:	1.0 sec
Conc.:	SV internal standard mix (5 ng/µL) (cat.# 31206)	Cool Time between	Stages: 0.4 sec
<b>Injection</b>	Methylene chloride	<b>Detector</b>	MS
Inj. Vol.:	10 mg/mL	Mode:	Transfer Line Temp.: 300 °C
Liner:	Premium 4 mm Precision liner w/wool (cat.# 23305)	Analyzer Type:	TOF
Inj. Temp.:	275 °C	Source Temp.:	250 °C
<b>Oven</b>		Electron Energy:	-70 eV
Oven Temp.:	Rxi-17Sil MS: 40 °C (hold 1 min) to 320 °C at 2.5 °C/min (hold 7 min)	Mass Defect:	100 mu/100 u
<b>Carrier Gas</b>	Rxi-1HT: 45 °C (hold 1 min) to 325 °C at 2.5 °C/min (hold 7 min)	Ionization Mode:	El
	He, corrected constant flow (1 mL/min)	Acquisition Range:	45 to 550 amu
		Spectral Acquisition	Rate: 100 spectra/sec
		<b>Instrument</b>	LECO Pegasus 4D GCxGC-TOFMS