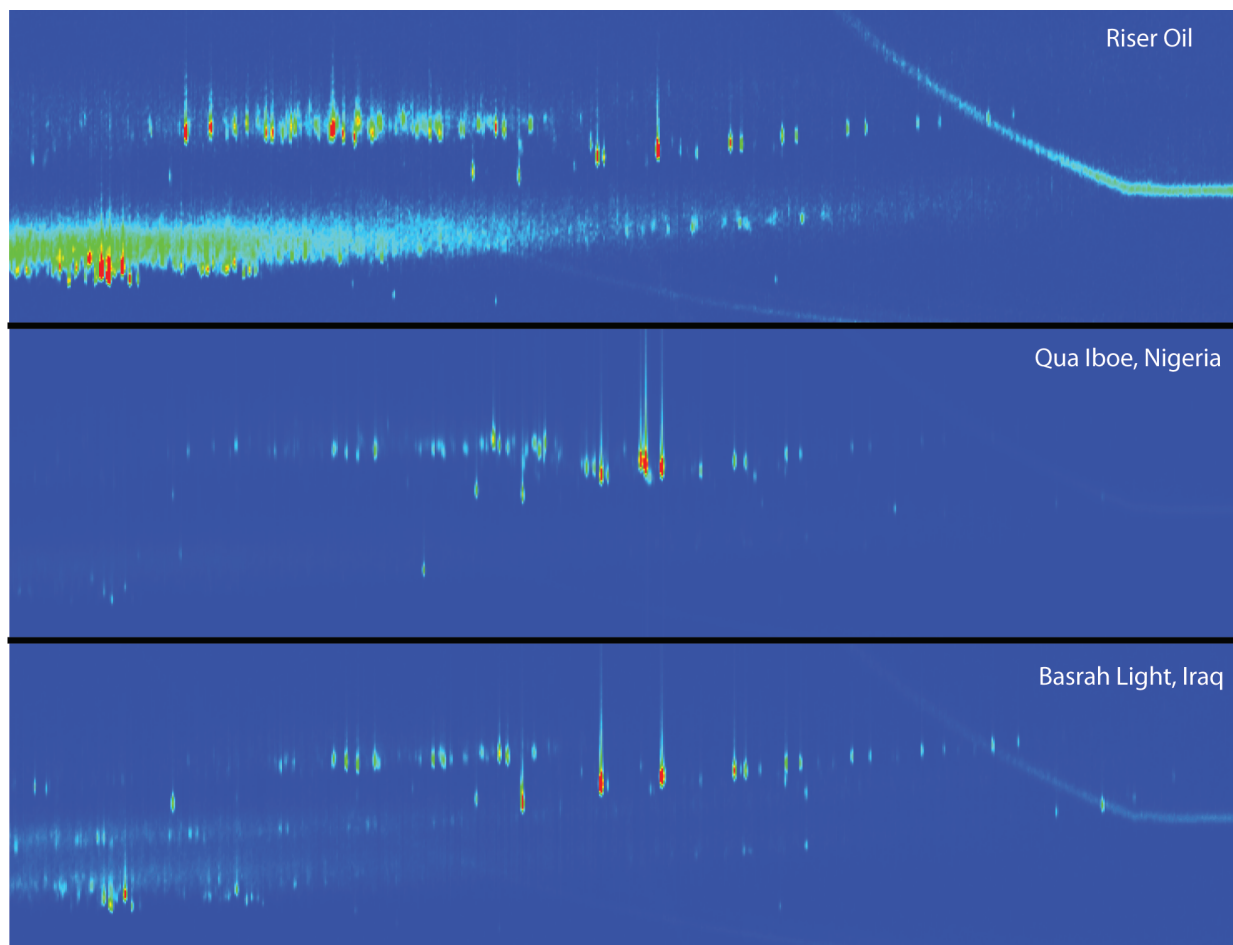


Steranes and Hopanes in Light Crude Oil on Rxi17Sil MS and Rxi-1HT (GCxGC-TOFMS; m/z 217, 218, and 191)



GC_PC1256

Column	Rxi-17Sil MS 60 m, 0.25 mm ID, 0.10 μ m (cat.# custom) Rxi-1HT 1 m, 0.25 mm ID, 0.10 μ m (cat.# 13950)	Modulation	Modulator Temp. Offset: 20 °C
Sample	Riser pipe oil from Deepwater Horizon oil spill SV internal standard mix (5 ng/ μ L) (cat.# 31206) Light crude oil, Qua Iboe, Nigeria Light crude oil, Basrah Light, Iraq		Second Dimension Separation Time: 2.8 sec Hot Pulse Time: 1.0 sec Cool Time between Stages: 0.4 sec
Diluent:	Methylene chloride	Detector	MS
Conc.:	10 mg/mL	Mode:	
Injection		Transfer Line Temp.:	300 °C
Inj. Vol.:	1.0 μ L split (split ratio 10:1)	Analyzer Type:	TOF
Liner:	Premium 4 mm Precision liner w/wool (cat.# 23305)	Source Temp.:	250 °C
Inj. Temp.:	275 °C	Electron Energy:	-70 eV
Oven		Mass Defect:	100 mu/100 u
Oven Temp.:	Rxi-17Sil MS: 40 °C (hold 1 min) to 320 °C at 2.5 °C/min (hold 7 min) Rxi-1HT: 45 °C (hold 1 min) to 325 °C at 2.5 °C/min (hold 7 min)	Ionization Mode:	EI
Carrier Gas	He, corrected constant flow (1 mL/min)	Acquisition Range:	45 to 550 amu
		Spectral Acquisition Rate:	100 spectra/sec
		Instrument	LECO Pegasus 4D GCxGC-TOFMS