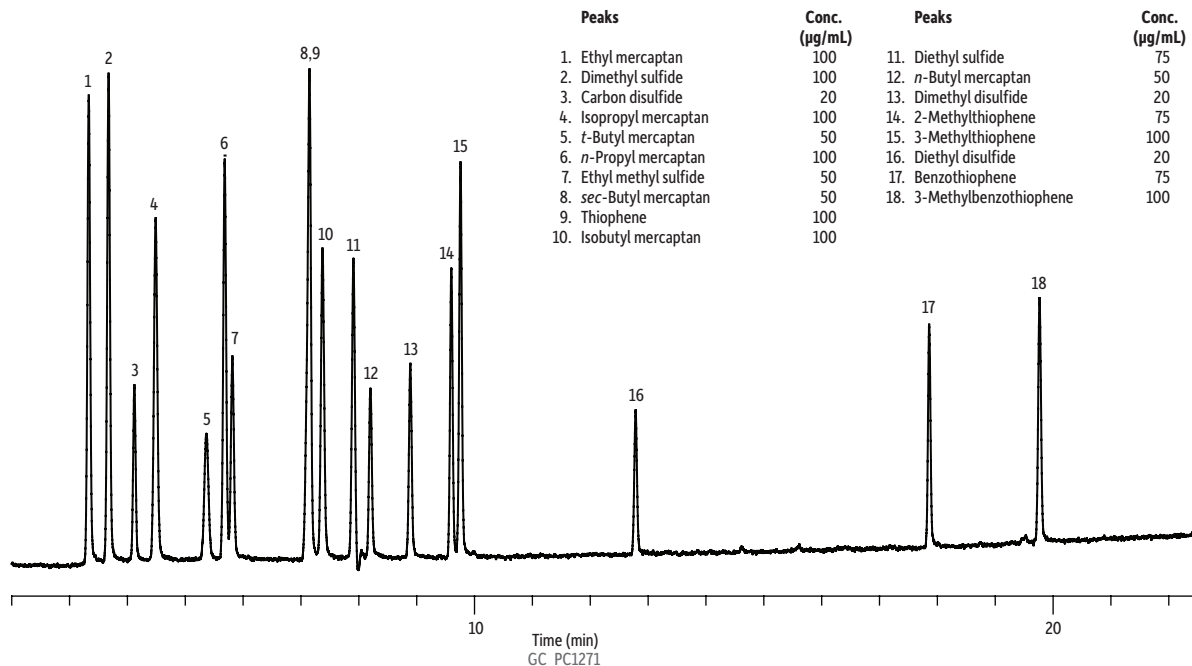


Sulfur Compounds on Rtx®-1



Column Rtx®-1, 30 m, 0.32 mm ID, 4.00 µm (cat.# 10198)
Sample ASTM D5623 standards 1 & 2 from DCG Partnership 1, Ltd.
Injection
 Inj. Vol.: 0.2 µL split (split ratio 10:1)
 Liner: 4 mm ID cup inlet liner with Siltek® deactivation
 Inj. Temp.: 275 °C
 Split Vent Flow Rate: 24 mL/min
Oven
 Oven Temp.: 30 °C (hold 2 min) to 200 °C at 10 °C/min (hold 10 min)

Carrier Gas He, constant flow
 Flow Rate: 2.4 mL/min
 Linear Velocity: 38 cm/sec @ 30 °C
 Detector DP SCD @ 800 °C
 Burner Vacuum: 363 torr
 Hydrogen Flow Rate: 40 mL/min
 Air Flow Rate: 60 mL/min
Instrument Agilent 7890B GC
Notes Solvent standard of sulfur components found in gasoline samples utilizing ASTM D5623.