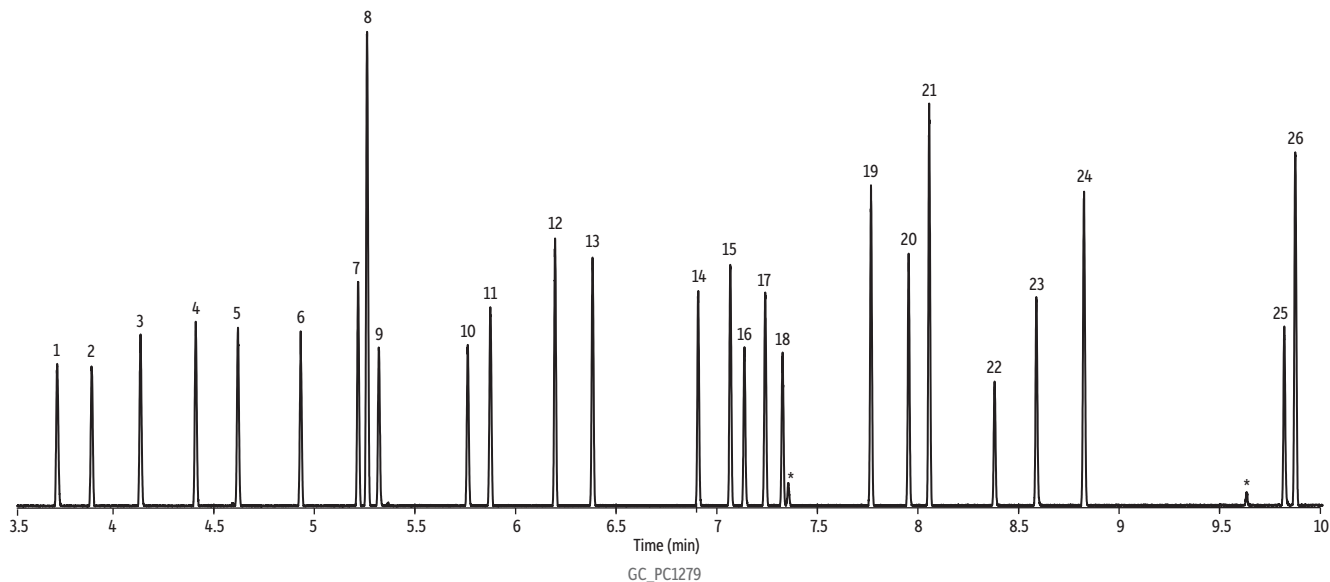


# Comprehensive Glycol Ether Mix on Rxi®-1301Sil MS

| Peaks                   | tR (min) | Conc. (µg/mL) | Common Name                               |
|-------------------------|----------|---------------|---|
| 1. EGiPE                | 3.723    | 100           | Ethylene glycol isopropyl ether           |
| 2. Perfluoro TEGME (IS) | 3.894    | 100           | Perfluoro triethylene glycol methyl ether |
| 3. EGPE                 | 4.137    | 100           | Ethylene glycol propyl ether              |
| 4. PnPGE                | 4.411    | 100           | Propylene glycol propyl ether             |
| 5. PGMA                 | 4.621    | 100           | Propylene glycol methyl ether acetate     |
| 6. EGEA                 | 4.933    | 100           | Ethylene glycol ethyl ether acetate       |
| 7. PGBE                 | 5.218    | 100           | Propylene glycol butyl ether              |
| 8. DEGDME               | 5.263    | 100           | Diethylene glycol dimethyl ether          |
| 9. DEGME                | 5.322    | 100           | Diethylene glycol methyl ether            |
| 10. DEGEE               | 5.763    | 100           | Diethylene glycol ethyl ether             |
| 11. 1,2-DCB-D4 (IS)     | 5.876    | 100           | 1,2-dichlorobenzene-D4                    |
| 12. EGBEA               | 6.197    | 100           | Ethylene glycol butyl ether acetate       |
| 13. EGHE                | 6.384    | 100           | Ethylene glycol hexyl ether               |
| 14. DEGBE               | 6.909    | 100           | Diethylene glycol butyl ether             |
| 15. TEGDME              | 7.069    | 100           | Triethylene glycol dimethyl ether         |
| 16. TEGME               | 7.138    | 100           | Triethylene glycol methyl ether           |
| 17. EGPhE               | 7.242    | 100           | Ethylene glycol phenyl ether              |
| 18. PGPhE               | 7.328    | 100           | Propylene glycol phenyl ether             |
| 19. DEGBEA              | 7.768    | 100           | Diethylene glycol butyl ether acetate     |
| 20. DEGHE               | 7.955    | 100           | Diethylene glycol hexyl ether             |
| 21. DEGDDE              | 8.057    | 100           | Diethylene glycol dibutyl ether           |
| 22. TEGBE               | 8.382    | 100           | Triethylene glycol butyl ether            |
| 23. TetraEGME           | 8.590    | 100           | Tetraethylene glycol methyl ether         |
| 24. TEGDA               | 8.826    | 100           | Triethylene glycol diacetate              |
| 25. PentaEGME           | 9.822    | 100           | Pentaethylene glycol methyl ether         |
| 26. EGDPHE              | 9.877    | 100           | Ethylene glycol diphenyl ether            |

\*Indicates a minor isomer. Standard was prepared from commercially available neat compounds, 95-99% purity.



**Column** Rxi®-1301Sil MS, 30 m, 0.25 mm ID, 0.25 µm (cat.# 16094)  
**Sample** Diluent: Methanol  
 Conc.: 100 ppm  
**Injection** Inj. Vol.: 1 µL split (split ratio 30:1)  
 Inj. Temp.: 260 °C  
**Oven** Oven Temp.: 40 °C (hold 2 min) to 300 °C at 27 °C/min (hold 3 min)  
**Carrier Gas** He, constant flow  
 Flow Rate: 1.3 mL/min  
 Linear Velocity: 41.05 cm/sec @ 40 °C  
**Detector** MS

Scan Program:  

| Group | Start Time (min) | Scan Range (amu) | Scan Rate (scans/sec) |
|-------|------------------|------------------|-----------------------|
| 1     | 2                | 20-220           | 29                    |

 Transfer Line  
 Temp.: 300 °C  
 Analyzer Type: Quadrupole  
 Source Type: Inert  
 Source Temp.: 230 °C  
 Quad Temp.: 150 °C  
 Electron Energy: 70 eV  
 Solvent Delay  
 Time: 2 min  
 Tune Type: PFTBA  
 Ionization Mode: EI  
**Instrument** Agilent 7890A GC & 5975C MSD