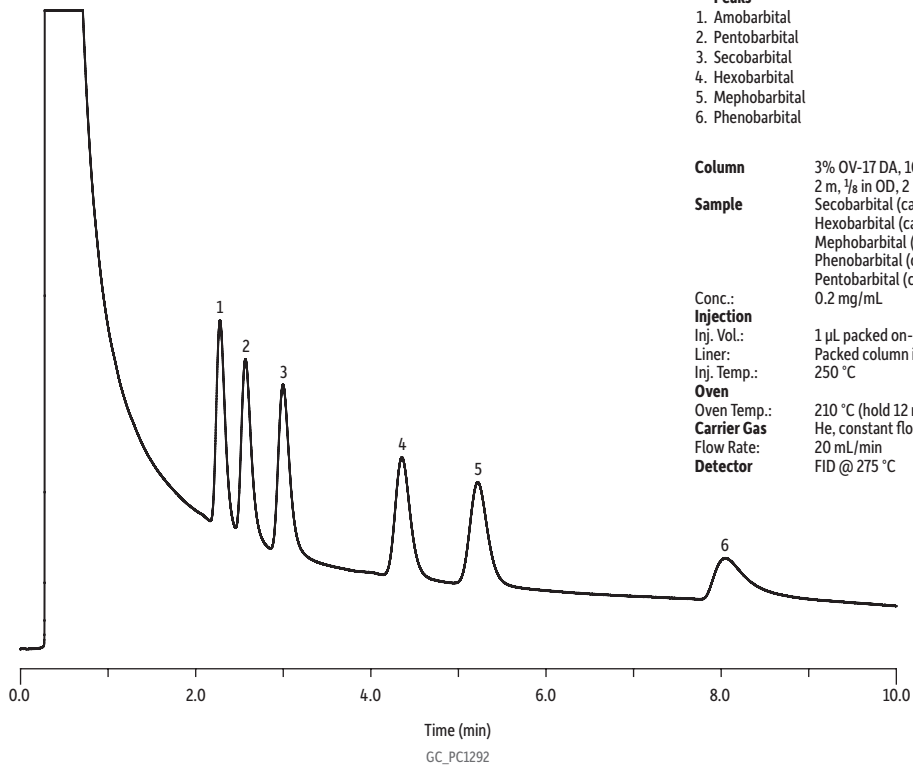


## Barbiturates on DiatoSorb WHP Packed Column



### Peaks

1. Amobarbital
2. Pentobarbital
3. Secobarbital
4. Hexobarbital
5. Mephobarbital
6. Phenobarbital

**Column** 3% OV-17 DA, 100/120 mesh on DiatoSorb WHP, SilcoSmooth tubing,  
2 m, 1/8 in OD, 2 mm ID

**Sample** Secobarbital (cat.# 34038)  
Hexobarbital (cat.# 34033)  
Mephobarbital (cat.# 34034)  
Phenobarbital (cat.# 34037)  
Pentobarbital (cat.# 34036)

Conc.: 0.2 mg/mL

### Injection

Inj. Vol.: 1  $\mu$ L packed on-column  
Liner: Packed column inlet adaptor kit for 1/4" injection ports (cat.# 21651)  
Inj. Temp.: 250  $^{\circ}$ C

### Oven

Oven Temp.: 210  $^{\circ}$ C (hold 12 min)

**Carrier Gas** He, constant flow

Flow Rate: 20 mL/min

**Detector** FID @ 275  $^{\circ}$ C